

## Product datasheet for **TA319671**

### SRP1 (KPNA1) Rabbit Polyclonal Antibody

#### Product data:

Product Type:	Primary Antibodies
Applications:	IF, WB
Recommended Dilution:	WB: 1 ug/mL, IF: 20 ug/mL
Reactivity:	Human, Mouse, Rat
Host:	Rabbit
Isotype:	IgG
Clonality:	Polyclonal
Immunogen:	KPNA1 antibody was raised against a 15 amino acid synthetic peptide near the amino terminus of human KPNA1.
Formulation:	KPNA1 Antibody is supplied in PBS containing 0.02% sodium azide.
Concentration:	1 mg/ml
Purification:	KPNA1 Antibody is affinity chromatography purified via peptide column.
Conjugation:	Unconjugated
Storage:	Store at -20°C as received.
Stability:	Stable for 12 months from date of receipt.
Gene Name:	karyopherin subunit alpha 1
Database Link:	<a href="#">NP_002255</a> <a href="#">Entrez Gene 16646 Mouse</a> <a href="#">Entrez Gene 288064 Rat</a> <a href="#">Entrez Gene 3836 Human</a> <a href="#">P52294</a>

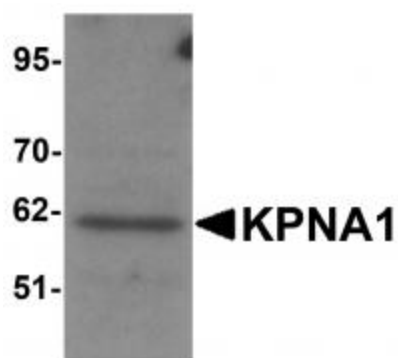
**Background:** KPNA1 Antibody: Karyopherin, a cytosolic and heterodimeric protein complex consisting of alpha and beta subunits, is responsible for targeting proteins with nuclear localization signals to the nuclear pore complex by an energy requiring, Ran-dependent mechanism. The alpha subunit and imported substrate enter the nucleus and accumulate in the nucleoplasm, while the beta subunit accumulates at the NPC. KPNA1, also known as importin alpha 5, is the alpha subunit of karyopherin, which forms a complex with importin subunit beta-1 and functions in nuclear protein import as an adapter protein for nuclear receptor KPNB1. It is ubiquitously expressed and polyubiquitinated in the presence of RAG1. KPNA1 interacts with various virus nucleoproteins, including those of Ebola and influenza.



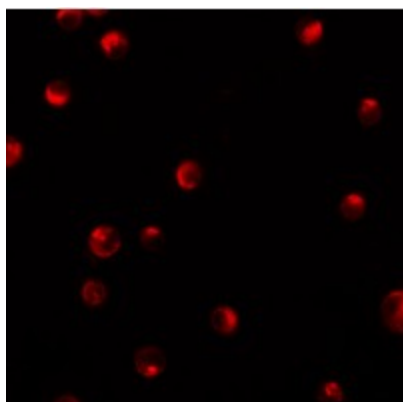
[View online »](#)

Synonyms: IPOA5; NPI-1; RCH2; SRP1

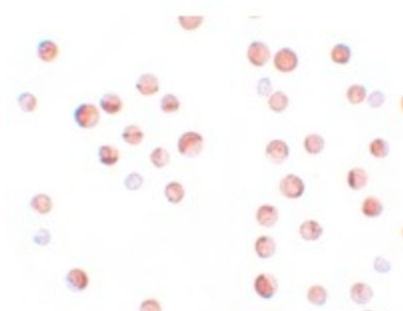
### Product images:



Western blot analysis of KPNA1 in HeLa cell lysate with KPNA1 antibody at 1ug/mL.



Immunofluorescence of KPNA1 in K562 cells with KPNA1 antibody at 20 ug/mL.



Immunocytochemistry of KPNA1 in HeLa cells with KPNA1 antibody at 2.5 ug/mL.