

## Product datasheet for **TA319670**

### **KAL1 (ANOS1) Rabbit Polyclonal Antibody**

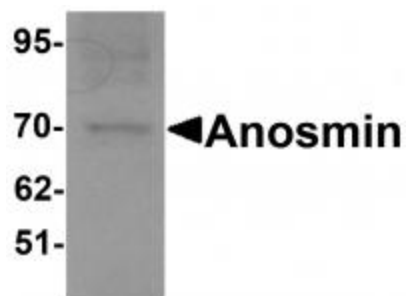
#### **Product data:**

Product Type:	Primary Antibodies
Applications:	IF, WB
Recommended Dilution:	WB: 1 ug/mL, ICC: 5 ug/mL, IF: 20 ug/mL
Reactivity:	Human
Host:	Rabbit
Isotype:	IgG
Clonality:	Polyclonal
Immunogen:	Anosmin antibody was raised against an 18 amino acid synthetic peptide near the center of human Anosmin.
Formulation:	Anosmin Antibody is supplied in PBS containing 0.02% sodium azide.
Concentration:	1ug/ul
Purification:	Anosmin Antibody is affinity chromatography purified via peptide column.
Conjugation:	Unconjugated
Storage:	Store at -20°C as received.
Stability:	Stable for 12 months from date of receipt.
Gene Name:	anosmin 1
Database Link:	<a href="#">NP_000207</a> <a href="#">Entrez Gene 3730 Human P23352</a>
Background:	Anosmin Antibody: Mutations in Anosmin-1, an extracellular matrix-associated glycosylated protein, have been linked with Kallmann Syndrome (KS), an X-linked genetic disorder characterized by loss of smell caused by abnormal olfactory bulb development and delayed puberty caused by disrupted migration of the gonadotropin-releasing hormone neuron. Anosmin-1 has been shown to directly bind FGFR1 via its N-terminal cysteine-rich domain, whey-acidic protein-like domain, and its first FnIII repeat with the D2 and D3 ectodomains of FGFR1. It is thought that Anosmin-1 can modulate FGFR1 signaling and have opposing effects on the formation and activation of FGF2-FGFR1-heparin complex.
Synonyms:	ADMLX; HH1; HHA; KAL; KAL1; KALIG-1; KMS; WFDC19

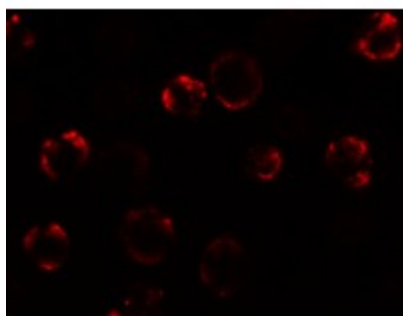


[View online »](#)

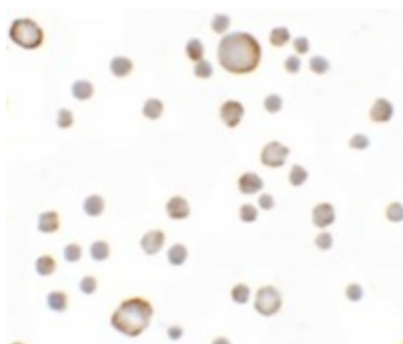
## Product images:



Western blot analysis of Anosmin in MCF7 cell lysate with Anosmin antibody at 1 ug/mL.



Immunofluorescence of Anosmin in MCF7 cells with Anosmin antibody at 20 ug/mL.



Immunocytochemistry of Anosmin in MCF7 cells with Anosmin antibody at 5 ug/mL.