

## Product datasheet for **TA319665**

### IL15 Rabbit Polyclonal Antibody

#### Product data:

|                         |   |
|-------------------------|---|
| Product Type:           | Primary Antibodies  |
| Applications:           | IHC, WB   |
| Recommended Dilution:   | WB: 1 - 2 ug/mL   |
| Reactivity:             | Human, Mouse, Rat   |
| Host:                   | Rabbit  |
| Isotype:                | IgG   |
| Clonality:              | Polyclonal  |
| Immunogen:              | Rabbit polyclonal IL-15 antibody was raised against a 13 amino acid peptide near the center of human IL-15.   |
| Formulation:            | IL-15 Antibody is supplied in PBS containing 0.02% sodium azide.  |
| Concentration:          | 1ug/ul  |
| Purification:           | IL-15 Antibody is affinity chromatography purified via peptide column.  |
| Conjugation:            | Unconjugated  |
| Storage:                | Store at -20°C as received.   |
| Stability:              | Stable for 12 months from date of receipt.  |
| Predicted Protein Size: | 18 kDa  |
| Gene Name:              | interleukin 15  |
| Database Link:          | <a href="#">NP_000576</a><br><a href="#">Entrez Gene 16168 Mouse</a> <a href="#">Entrez Gene 25670 Rat</a> <a href="#">Entrez Gene 3600 Human</a><br><a href="#">P40933</a> |



[View online »](#)

**Background:**

IL-15 Antibody: Interleukin 15 (IL-15) is a cytokine that regulates T and natural killer cell activation and proliferation. This cytokine and IL-2 share many biological activities as both have been found to bind common hematopoietin receptor subunits, and may compete for the same receptor, and thus negatively regulate each other's activity. The number of CD8+ memory cells is shown to be controlled by a balance between IL-15 and IL-2. This cytokine induces the activation of JAK kinases, as well as the phosphorylation and activation of transcription activators STAT3, STAT5, and STAT6. In mouse, studies suggest that IL-15 may increase the expression of apoptosis inhibitor Bcl-xL, possibly through the transcription activation activity of STAT6, and thus prevent apoptosis.

**Synonyms:**

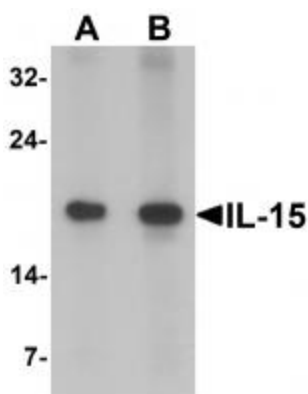
IL-15

**Protein Families:**

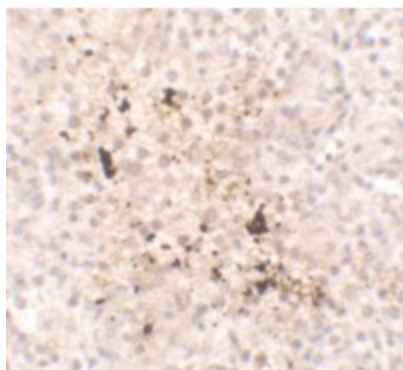
Druggable Genome, Secreted Protein

**Protein Pathways:**

Cytokine-cytokine receptor interaction, Jak-STAT signaling pathway

**Product images:**


Western blot analysis of IL-15 in rat spleen tissue lysate with IL-15 antibody at (A) 1 and (B) 2 ug/mL



Immunohistochemistry of IL-15 in spleen tissue with IL-15 antibody at 2.5 ug/mL.