

Product datasheet for **TA319661**

HOX11 (TLX1) Rabbit Polyclonal Antibody

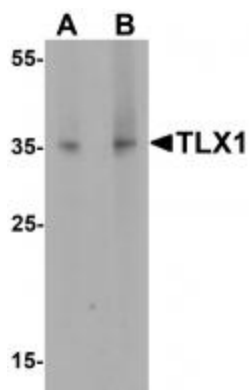
Product data:

Product Type:	Primary Antibodies
Applications:	IHC, WB
Recommended Dilution:	WB: 1 - 2 ug/mL
Reactivity:	Human, Mouse, Rat
Host:	Rabbit
Isotype:	IgG
Clonality:	Polyclonal
Immunogen:	TLX1 antibody was raised against a 16 amino acid peptide near the amino terminus of human TLX1.
Formulation:	TLX1 Antibody is supplied in PBS containing 0.02% sodium azide.
Concentration:	1ug/ul
Purification:	TLX1 Antibody is affinity chromatography purified via peptide column.
Conjugation:	Unconjugated
Storage:	Store at -20°C as received.
Stability:	Stable for 12 months from date of receipt.
Predicted Protein Size:	Predicted: 36 kDa; Observed: 35 kDa
Gene Name:	T-cell leukemia homeobox 1
Database Link:	NP_005512 Entrez Gene 21908 MouseEntrez Gene 499361 RatEntrez Gene 3195 Human P31314
Background:	TLX1 Antibody: The Hox proteins play a role in patterns of embryonic development and cellular differentiation by regulating downstream target genes. TLX1, also called homeobox11 (HOX11), as it is located outside of the four mammalian Hox clusters, is a DNA-binding nuclear transcription factor. TLX1 encodes a homeobox-domain containing protein and is containing a glycine and proline-rich amino terminus. TLX1 is required for maintenance of the developing spleen and cell survival. TLX1 is highly expressed in T-cell leukemia and lymphoid neoplasias as a result of translocation. TLX1-deficient mice have no spleen.
Synonyms:	HOX11; TCL3

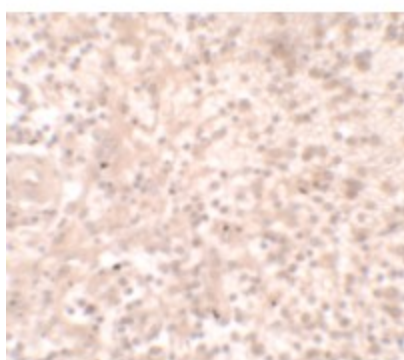


[View online »](#)

Product images:



Western blot analysis of TLX1 in mouse spleen tissue lysate with TLX1 antibody at (A) 1 ug/mL and (B) 2 ug/mL.



Immunohistochemistry of TLX1 in human spleen tissue with TLX1 antibody at 2.5 ug/mL.