

Product datasheet for **TA319660**

FOXA2 Rabbit Polyclonal Antibody

Product data:

Product Type:	Primary Antibodies
Applications:	IF, WB
Recommended Dilution:	WB: 1 ug/mL
Reactivity:	Human
Host:	Rabbit
Isotype:	IgG
Clonality:	Polyclonal
Immunogen:	FOXA2 antibody was raised against a 16 amino acid peptide near the center of human FOXA2 .
Formulation:	FOXA2 Antibody is supplied in PBS containing 0.02% sodium azide.
Concentration:	1ug/ul
Purification:	FOXA2 Antibody is affinity chromatography purified via peptide column.
Conjugation:	Unconjugated
Storage:	Store at -20°C as received.
Stability:	Stable for 12 months from date of receipt.
Predicted Protein Size:	Predicted: 51 kDa; Observed: 54 kDa
Gene Name:	forkhead box A2
Database Link:	NP_068556 Entrez Gene 3170 Human Q9Y261
Background:	FOXA2 Antibody: FOXA2 is one of three members of the FOXA family, a subset of the forkhead family of transcription factors which play vital roles in development. FOXA2 was initially identified through library screening as a closely related homolog of FOXA1. Both FOXA2 and FOXA1 act as transcriptional activators in adult liver and also play a role in body axis formation, neural tube patterning and definitive endoderm formation during gastrulation.
Synonyms:	HNF3B; TCF3B

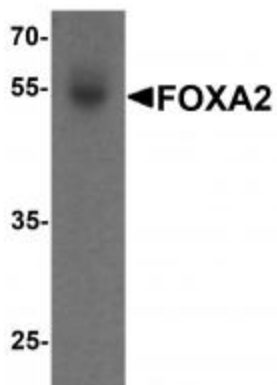


[View online »](#)

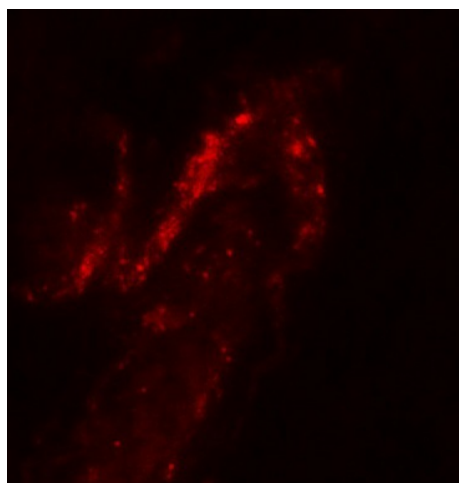
Protein Families: Embryonic stem cells, ES Cell Differentiation/IPS, Induced pluripotent stem cells, Transcription Factors

Protein Pathways: Maturity onset diabetes of the young

Product images:



Western blot analysis of FOXA2 in human bladder tissue lysate with FOXA2 antibody at 1 ug/mL.



Immunofluorescence of FOXA2 in human bladder tissue with FOXA2 antibody at 20 ug/mL.