

Product datasheet for **TA319658**

GRINA Rabbit Polyclonal Antibody

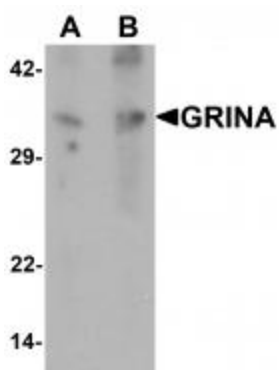
Product data:

Product Type:	Primary Antibodies
Applications:	WB
Recommended Dilution:	WB: 1 - 2 ug/mL
Reactivity:	Human
Host:	Rabbit
Isotype:	IgG
Clonality:	Polyclonal
Immunogen:	Rabbit polyclonal GRINA antibody was raised against an 18 amino acid peptide near the center of human GRINA.
Formulation:	GRINA Antibody is supplied in PBS containing 0.02% sodium azide.
Concentration:	1ug/ul
Purification:	GRINA Antibody is affinity chromatography purified via peptide column.
Conjugation:	Unconjugated
Storage:	Store at -20°C as received.
Stability:	Stable for 12 months from date of receipt.
Predicted Protein Size:	41 kDa
Gene Name:	glutamate ionotropic receptor NMDA type subunit associated protein 1
Database Link:	NP_001009184 Entrez Gene 2907 Human Q7Z429
Background:	GRINA Antibody: The transmembrane BAX inhibitor motif (TMBIM) family of proteins includes the founder member TMBIM6/BI-1, TMBIM1/RECS1 (responsive to centrifugal force and shear stress gene 1 protein), TMBIM2/LFG (life guard), TMBIM3/GRINA (glutamate receptor ionotropic NMDA protein 1), TMBIM4/GAAP (Golgi anti-apoptotic-associated protein), and TMBIM5/GHTIM (growth hormone-inducible transmembrane protein). They are highly conserved in mammals and zebrafish and contain a conserved BAX inhibitor-1 motif. GRINA is expressed in the brain and is a potential apoptotic regulator.
Synonyms:	HNRGW; LFG1; NMDARA1; TMBIM3



[View online »](#)

Product images:



Western blot analysis of GRINA in human testis tissue lysate with GRINA antibody at (A) 1 and (B) 2 ug/mL.