

Product datasheet for **TA319656**

GDF1 Rabbit Polyclonal Antibody

Product data:

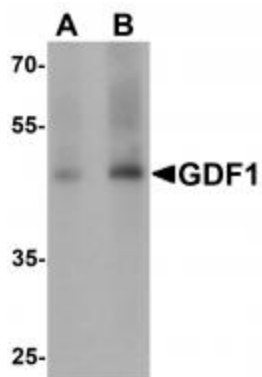
Product Type:	Primary Antibodies
Applications:	IF, WB
Recommended Dilution:	WB: 1 - 2 ug/mL, IF: 20 ug/mL
Reactivity:	Human, Mouse, Rat
Host:	Rabbit
Isotype:	IgG
Clonality:	Polyclonal
Immunogen:	Rabbit polyclonal GDF1 antibody was raised against a 16 amino acid peptide near the amino terminus of human GDF1.
Formulation:	GDF1 Antibody is supplied in PBS containing 0.02% sodium azide.
Concentration:	1ug/ul
Purification:	GDF1 Antibody is affinity chromatography purified via peptide column.
Conjugation:	Unconjugated
Storage:	Store at -20°C as received.
Stability:	Stable for 12 months from date of receipt.
Predicted Protein Size:	41 kDa
Gene Name:	growth differentiation factor 1
Database Link:	NP_001483 Entrez Gene 14559 MouseEntrez Gene 306351 RatEntrez Gene 2657 Human P27539
Background:	GDF1 Antibody: Growth differentiation factors (GDFs) are members of the transforming growth factor (TGF) superfamily that is involved in embryonic development and adult tissue homeostasis. GDF1 was initially identified as a temporally expressed gene in the mouse central nervous system during embryonic development, with only one isoform detected in adult tissues. GDF1 is required for left-right patterning during development and directly interacts with Nodal, another member of the TGF-beta superfamily. It has been suggested that GDF1 regulates the activity and signaling range of Nodal through direct interaction.
Synonyms:	DORV; DTGA3; RAI



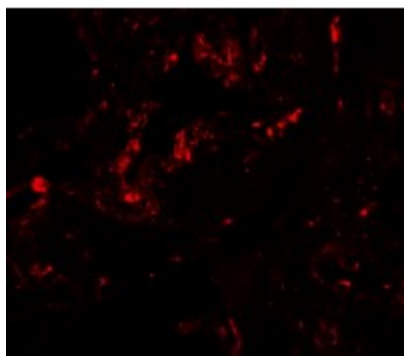
[View online »](#)

Protein Families: Druggable Genome, Secreted Protein

Product images:



Western blot analysis of GDF1 in rat lung tissue lysate with GDF1 antibody at (A) 1 and (B) 2 ug/mL.



Immunofluorescence of GDF1 in human lung tissue with GDF1 antibody at 20 ug/mL.