

Product datasheet for **TA319653**

FLT3 Rabbit Polyclonal Antibody

Product data:

Product Type:	Primary Antibodies
Applications:	IF, WB
Recommended Dilution:	WB: 1 - 2 ug/mL, IF: 20 ug/mL
Reactivity:	Human, Mouse
Host:	Rabbit
Isotype:	IgG
Clonality:	Polyclonal
Immunogen:	FLT3 antibody was raised against an 18 amino acid synthetic peptide near the center of human FLT3.
Formulation:	FLT3 Antibody is supplied in PBS containing 0.02% sodium azide.
Concentration:	1ug/ul
Purification:	FLT3 Antibody is affinity chromatography purified via peptide column.
Conjugation:	Unconjugated
Storage:	Store at -20°C as received.
Stability:	Stable for 12 months from date of receipt.
Predicted Protein Size:	109 kDa
Gene Name:	fms related tyrosine kinase 3
Database Link:	NP_004110 Entrez Gene 14255 Mouse Entrez Gene 2322 Human P36888
Background:	FLT3 Antibody: FLT3 is a member of the class III receptor tyrosine kinase family and its internal tandem duplication (ITD) is preferentially seen in acute myeloid leukemia and myelodysplastic syndrome among various hematological malignancies. It is a membrane bound glycosylated protein that is expressed primarily in early hematopoietic progenitor cells. Upon binding its ligand FL, FLT3 activates multiple signaling pathways including the PI3K/Akt and Ras/MEK/MAPK pathways. In cells expressing FLT3-ITD, these pathways are constitutively on, resulting in abnormal cell growth and anti-apoptotic activity.
Synonyms:	CD135; FLK-2; FLK2; STK1

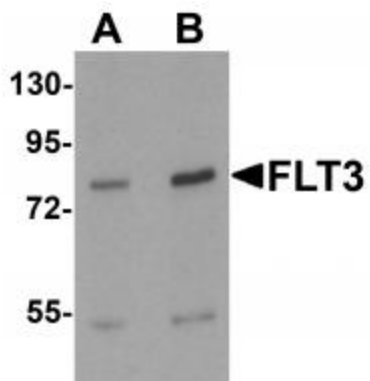


[View online »](#)

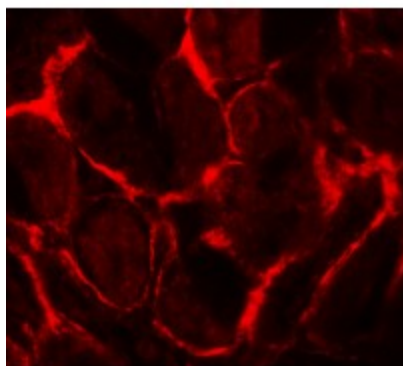
Protein Families: Druggable Genome, ES Cell Differentiation/IPS, Protein Kinase, Transmembrane

Protein Pathways: Acute myeloid leukemia, Cytokine-cytokine receptor interaction, Hematopoietic cell lineage, Pathways in cancer

Product images:



Western blot analysis of FLT3 in 3T3 cell lysate with FLT3 antibody at (A) 1 and (B) 2 ug/mL.



Immunofluorescence of FLT3 in human kidney tissue with FLT3 antibody at 20 ug/mL.