

## Product datasheet for **TA319649**

### ACSL1 Rabbit Polyclonal Antibody

#### Product data:

Product Type:	Primary Antibodies
Applications:	IF, WB
Recommended Dilution:	WB: 1 - 2 ug/mL, IF: 20 ug/mL
Reactivity:	Human, Mouse, Rat
Host:	Rabbit
Isotype:	IgG
Clonality:	Polyclonal
Immunogen:	Rabbit polyclonal ACSL1 antibody was raised against an 18 amino acid peptide near the center of human ACSL1. The immunogen is located within amino acids 240 - 290 of ACSL1.
Formulation:	ACSL1 Antibody is supplied in PBS containing 0.02% sodium azide.
Concentration:	1ug/ul
Purification:	ACSL1 Antibody is affinity chromatography purified via peptide column.
Conjugation:	Unconjugated
Storage:	Store at -20°C as received.
Stability:	Stable for 12 months from date of receipt.
Predicted Protein Size:	77 kDa
Gene Name:	acyl-CoA synthetase long-chain family member 1
Database Link:	<a href="#">NP_001986</a> <a href="#">Entrez Gene 14081 Mouse</a> <a href="#">Entrez Gene 25288 Rat</a> <a href="#">Entrez Gene 2180 Human</a> <a href="#">P33121</a>
Background:	ACSL1 Antibody: Long-chain acyl coenzyme A synthetase 1 (ACSL1) catalyzes the synthesis of acyl-CoA from long-chain fatty acids in an ATP-dependent manner. ACSL1 is a member of a family of long-chain acyl-CoA synthetases which differ in substrate preference, tissue expression, and subcellular localization. In mouse, ASCL1 is the major acyl-CoA enzyme in the heart, providing 60-90% of heart ATP. Loss of ASCL1 either globally or in heart ventricles resulted in impaired fatty acid oxidation, activation of the mammalian target of rapamycin (mTOR), and cardiac hypertrophy.
Synonyms:	ACS1; FACL1; FACL2; LACS; LACS1; LACS2

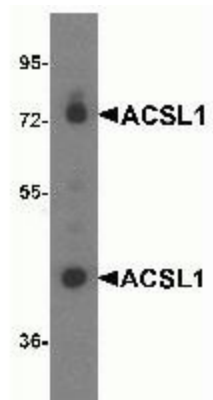


[View online »](#)

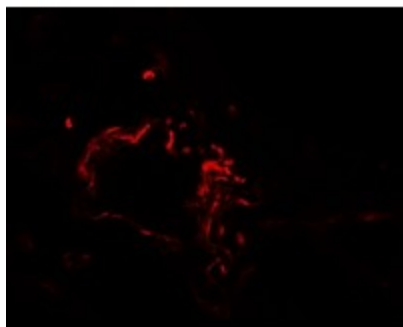
**Protein Families:** Transmembrane

**Protein Pathways:** Adipocytokine signaling pathway, Fatty acid metabolism, Metabolic pathways, PPAR signaling pathway

**Product images:**



Western blot analysis of ACSL1 expression in human liver tissue lysate with ACSL1 antibody at 0.25ug/ml.



Immunofluorescence of ACSL1 in human lung tissue with ACSL1 antibody at 20ug/ml.