

Product datasheet for **TA319648**

EZH2 Rabbit Polyclonal Antibody

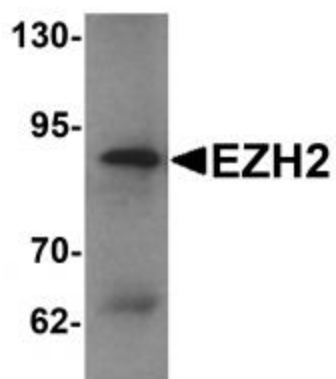
Product data:

Product Type:	Primary Antibodies
Applications:	IF, WB
Recommended Dilution:	WB: 1 ug/mL, ICC: 10 ug/mL, IF: 20 ug/mL
Reactivity:	Human, Mouse
Host:	Rabbit
Isotype:	IgG
Clonality:	Polyclonal
Immunogen:	EZH2 antibody was raised against a 17 amino acid synthetic peptide near the amino terminus of human EZH2.
Formulation:	EZH2 Antibody is supplied in PBS containing 0.02% sodium azide.
Concentration:	1ug/ul
Purification:	EZH2 Antibody is affinity chromatography purified via peptide column.
Conjugation:	Unconjugated
Storage:	Store at -20°C as received.
Stability:	Stable for 12 months from date of receipt.
Gene Name:	enhancer of zeste 2 polycomb repressive complex 2 subunit
Database Link:	AAH10858 Entrez Gene 2146 Human Q15910
Background:	EZH2 Antibody: EZH2 was initially identified as a homolog of the drosophila Enhancer of Zeste through exon trap screening of chromosome 21. Both EZH2 and the related protein EZH1 can form complexes with the noncanonical Polycomb repressive complex-2 (PRC2) and maintain repressive chromatin, but the PRC2-EZH1 complex mediates methylation of histone H3. Both EZH1 and EZH2 are thought to function in the maintenance of embryonic stem cell pluripotency and plasticity and recently have been shown to be essential for hair follicle homeostasis and wound repair. Overexpression of EZH2 has been reported as a marker for advanced and metastatic cancers.
Synonyms:	ENX-1; ENX1; EZH1; EZH2b; KMT6; KMT6A; WVS; WVS2

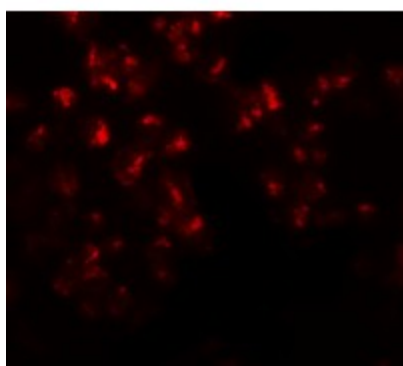


[View online »](#)

Product images:



Western blot analysis of EZH2 in 293 cell lysate with EZH2 antibody at 1 ug/mL.



Immunofluorescence of EZH2 in 293 cells with EZH2 antibody at 20 ug/mL.



Immunocytochemistry of EZH2 in 293 cells with EZH2 antibody at 10 ug/mL.