

## Product datasheet for **TA319647**

### EZH1 Rabbit Polyclonal Antibody

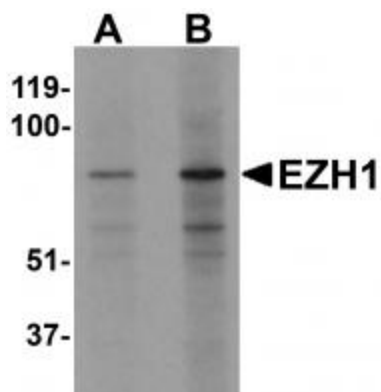
#### Product data:

Product Type:	Primary Antibodies
Applications:	IF, IHC, WB
Recommended Dilution:	WB: 1 - 2 ug/mL, ICC: 5 ug/mL, IF: 20 ug/mL
Reactivity:	Human, Mouse, Rat
Host:	Rabbit
Isotype:	IgG
Clonality:	Polyclonal
Immunogen:	EZH1 antibody was raised against an 18 amino acid synthetic peptide near the amino terminus of human EZH1.
Formulation:	EZH1 Antibody is supplied in PBS containing 0.02% sodium azide.
Concentration:	1 mg/ml
Purification:	EZH1 Antibody is affinity chromatography purified via peptide column.
Conjugation:	Unconjugated
Storage:	Store at -20°C as received.
Stability:	Stable for 12 months from date of receipt.
Gene Name:	enhancer of zeste 1 polycomb repressive complex 2 subunit
Database Link:	<a href="#">AAC50778</a> <a href="#">Entrez Gene 2145 Human</a> <a href="#">Q92800</a>
Background:	EZH1 Antibody: EZH1 was initially identified as a homolog of the drosophila Enhancer of Zeste through transcription mapping of chromosome 17q21. Both EZH1 and the related protein EZH2 can form complexes with the noncanonical Polycomb repressive complex-2 (PRC2) and maintain repressive chromatin, but the PRC2-EZH1 complex mediates methylation of histone H3. Both EZH1 and EZH2 are thought to function in the maintenance of embryonic stem cell pluripotency and plasticity and recently have been shown to be essential for hair follicle homeostasis and wound repair.
Synonyms:	KMT6B

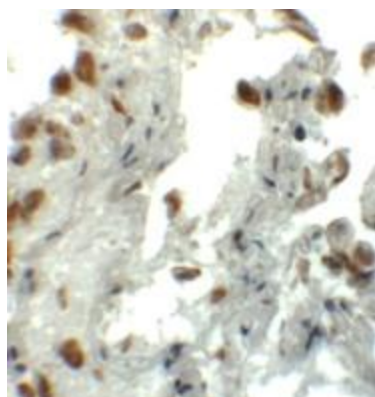


[View online »](#)

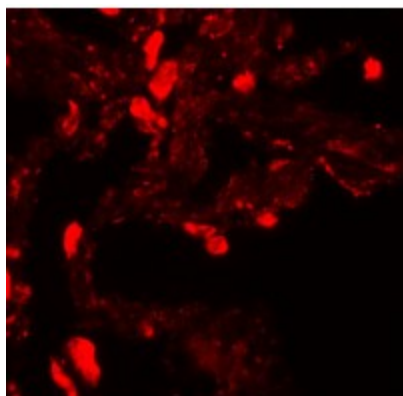
## Product images:



Western blot analysis of EZH1 in mouse lung tissue lysate with EZH1 antibody at (A) 1 and (B) 2 ug/mL



Immunohistochemistry of EZH1 in human lung tissue with EZH1 antibody at 5 ug/mL.



Immunofluorescence of EZH1 in human lung tissue with EZH1 antibody at 20 ug/mL.