

Product datasheet for **TA319645**

Estrogen Receptor 1 (ESR1) Rabbit Polyclonal Antibody

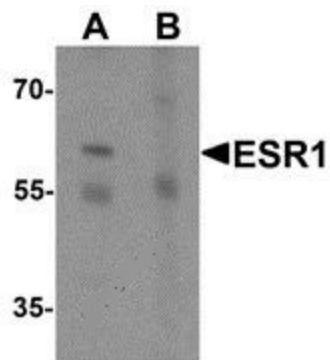
Product data:

Product Type:	Primary Antibodies
Applications:	IF, IHC, WB
Recommended Dilution:	WB: 1 - 2 ug/mL
Reactivity:	Human, Mouse, Rat
Host:	Rabbit
Isotype:	IgG
Clonality:	Polyclonal
Immunogen:	ESR1 antibody was raised against an 18 amino acid peptide near the center of human ESR1.
Formulation:	ESR1 Antibody is supplied in PBS containing 0.02% sodium azide.
Concentration:	1ug/ul
Purification:	ESR1 Antibody is affinity chromatography purified via peptide column.
Conjugation:	Unconjugated
Storage:	Store at -20°C as received.
Stability:	Stable for 12 months from date of receipt.
Predicted Protein Size:	Predicted: 65 kDa; Observed: 62 kDa
Gene Name:	estrogen receptor 1
Database Link:	NP_001116214 Entrez Gene 2099 Human P03372
Background:	ESR1 Antibody: Estrogen receptors (ER) are members of the steroid/thyroid hormone receptor superfamily of ligand-activated transcription factors (1). Estrogen receptors, including ESR1, also known as ER-alpha and ESR2 (ER-beta), contain DNA binding and ligand binding domains and are critically involved in regulating the normal function of reproductive tissues. ESR1 is a widely expressed nuclear protein and serves as a strong activator of estrogen responsive genes (1,2). Phosphorylation of serines 104 and 106, located in the N-terminal transcription activation function-1 domain (AF-1), plays a large role in regulating ER alpha activity (3).
Synonyms:	ER; Era; ESR; ESRA; ESTRR; NR3A1

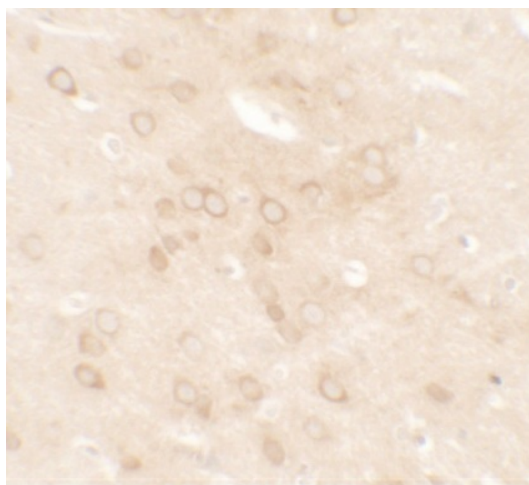


[View online »](#)

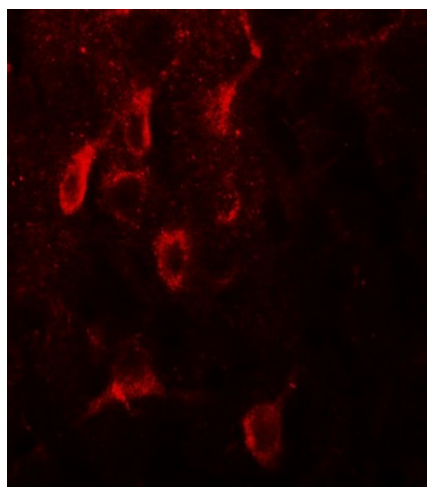
Product images:



Western blot analysis of ESR1 in rat brain tissue lysate with ESR1 antibody at 1 ug/mL in (A) the absence and (B) the presence of blocking peptide.



Immunohistochemistry of ESR1 in rat brain tissue with ESR1 antibody at 5 ug/mL.



Immunofluorescence of ESR1 in rat brain tissue with ESR1 antibody at 20 ug/mL.