

## Product datasheet for **TA319643**

### Endo G (ENDOG) Mouse Monoclonal Antibody

#### Product data:

Product Type:	Primary Antibodies
Applications:	WB
Recommended Dilution:	WB: 5 - 10 ug/mL
Reactivity:	Human, Mouse, Rat
Host:	Mouse
Isotype:	IgG1
Clonality:	Monoclonal
Immunogen:	Recombinant protein corresponding to amino acids 51 - 140 of human EndoG.
Formulation:	EndoG Monoclonal Antibody is supplied in PBS containing 0.02% sodium azide.
Concentration:	1ug/ul
Purification:	EndoG Monoclonal Antibody is immunoaffinity chromatography purified IgG.
Conjugation:	Unconjugated
Storage:	Store at -20°C as received.
Stability:	Stable for 12 months from date of receipt.
Gene Name:	endonuclease G
Database Link:	<a href="#">NP_004426</a> <a href="#">Entrez Gene 13804 Mouse</a> <a href="#">Entrez Gene 362100 Rat</a> <a href="#">Entrez Gene 2021 Human</a> <a href="#">Q14249</a>



[View online »](#)

**Background:**

EndoG Monoclonal Antibody: The fragmentation of nuclear DNA is a hallmark of apoptotic cell death. The activities of caspase and nuclease are involved in the DNA fragmentation. Caspase-activated deoxyribonuclease (CAD), also termed DNA fragmentation factor (DFF40), is one such nuclease, and is capable of inducing DNA fragmentation and chromatin condensation after cleavage by caspase-3 of its inhibitor ICAD/DFF45. Caspase and CAD independent DNA fragmentation also exists. Recent studies demonstrated that another nuclease, endonuclease G (EndoG), is specifically activated by apoptotic stimuli and is able to induce nucleosomal fragmentation of DNA independently of caspase and DFF/CAD. EndoG is a mitochondrion-specific nuclease that translocates to the nucleus and cleaves chromatin DNA during apoptosis. The homologue of mammalian EndoG is the first mitochondrial protein identified to be involved in apoptosis in *C. elegans*. EndoG also cleaves DNA in vitro.

**Synonyms:**

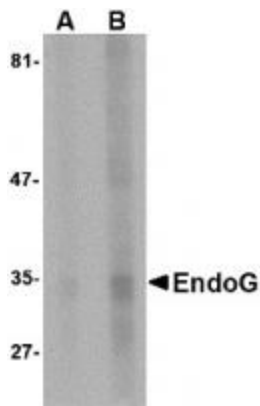
FLJ27463

**Protein Families:**

Druggable Genome

**Protein Pathways:**

Apoptosis

**Product images:**

Western blot analysis of EndoG expression in HepG2 cell lysate with EndoG antibody at (A) 5 and (B) 10 ug/mL.