

## Product datasheet for **TA319640**

### EMX2 Rabbit Polyclonal Antibody

#### Product data:

Product Type:	Primary Antibodies
Applications:	IHC
Recommended Dilution:	IHC: 5 ug/mL
Reactivity:	Human
Host:	Rabbit
Isotype:	IgG
Clonality:	Polyclonal
Immunogen:	EMX2 antibody was raised against an 16 amino acid synthetic peptide near the amino terminus of human EMX2.
Formulation:	EMX2 Antibody is supplied in PBS containing 0.02% sodium azide.
Concentration:	1ug/ul
Purification:	EMX2 Antibody is affinity chromatography purified via peptide column.
Conjugation:	Unconjugated
Storage:	Store at -20°C as received.
Stability:	Stable for 12 months from date of receipt.
Predicted Protein Size:	28 kDa
Gene Name:	empty spiracles homeobox 2
Database Link:	<a href="#">NP_004089</a> <a href="#">Entrez Gene 2018 Human Q04743</a>



[View online »](#)

**Background:**

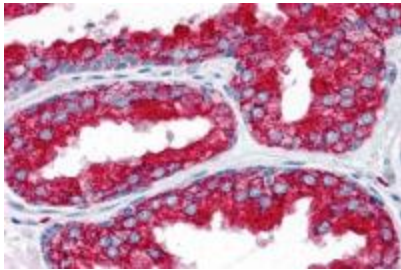
EMX2 Antibody: EMX2, like its closely related homolog EMX1, is a homeobox transcription factor involved in specifying cell fates in the developing central nervous system and participates in the development of olfactory neurons. EMX2 is expressed in the dorsal telencephalon during development in a low rostral-lateral to high caudal-medial gradient and is proposed to pattern the neocortex into defined functional areas. It is also expressed in embryonic and adult olfactory neuroepithelia where it complexes with eukaryotic translation initiation factor 4E (eIF4E) and possibly regulates mRNA transport or translation. In the developing urogenital system, it is expressed in epithelial tissues and is negatively regulated by HOXA10.

**Synonyms:**

empty spiracles homeobox 2; empty spiracles homolog 2; OTTHUMP00000020578

**Protein Families:**

Druggable Genome

**Product images:**

Immunohistochemistry of EMX2 in human prostate tissue with EMX2 antibody at 5 ug/mL.