

Product datasheet for **TA319639**

EMX2 Rabbit Polyclonal Antibody

Product data:

Product Type:	Primary Antibodies
Applications:	IF, IHC, WB
Recommended Dilution:	WB: 1 - 2 ug/mL, ICC: 2.5 ug/mL, IF: 20 ug/mL
Reactivity:	Human
Host:	Rabbit
Isotype:	IgG
Clonality:	Polyclonal
Immunogen:	EMX2 antibody was raised against an 18 amino acid synthetic peptide near the center of human EMX2.
Formulation:	EMX2 Antibody is supplied in PBS containing 0.02% sodium azide.
Concentration:	1ug/ul
Purification:	EMX2 Antibody is affinity chromatography purified via peptide column.
Conjugation:	Unconjugated
Storage:	Store at -20°C as received.
Stability:	Stable for 12 months from date of receipt.
Gene Name:	empty spiracles homeobox 2
Database Link:	NP_001159396 Entrez Gene 2018 Human Q04743
Background:	EMX2 Antibody: EMX2, like its closely related homolog EMX1, is a homeobox transcription factor involved in specifying cell fates in the developing central nervous system and participates in the development of olfactory neurons. EMX2 is expressed in the dorsal telencephalon during development in a low rostral-lateral to high caudal-medial gradient and is proposed to pattern the neocortex into defined functional areas. It is also expressed in embryonic and adult olfactory neuroepithelia where it complexes with eukaryotic translation initiation factor 4E (eIF4E) and possibly regulates mRNA transport or translation. In the developing urogenital system, it is expressed in epithelial tissues and is negatively regulated by HOXA10.

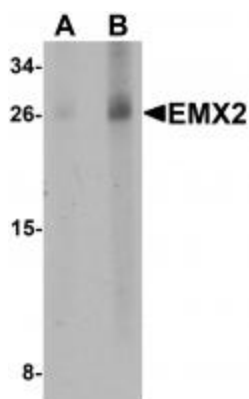


[View online »](#)

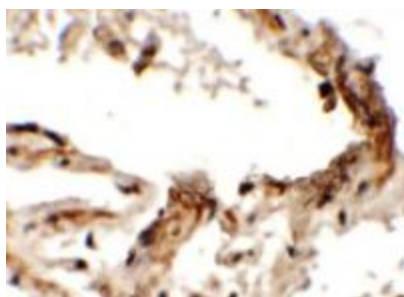
Synonyms: empty spiracles homeobox 2; empty spiracles homolog 2; OTTHUMP00000020578

Protein Families: Druggable Genome

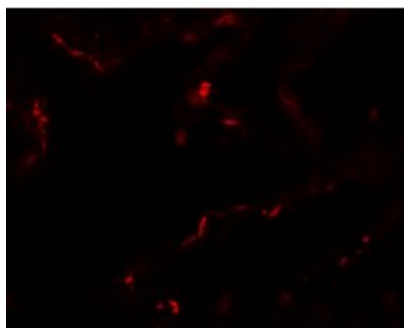
Product images:



Western blot analysis of EMX2 in human lung tissue lysate with EMX2 antibody at (A) 1 and (B) 2 ug/mL.



Immunohistochemistry of EMX2 in human lung tissue with EMX2 antibody at 2.5 ug/mL.



Immunofluorescence of EMX2 in human lung tissue with EMX2 antibody at 20 ug/mL.