

Product datasheet for **TA319638**

EMX1 Chicken Polyclonal Antibody

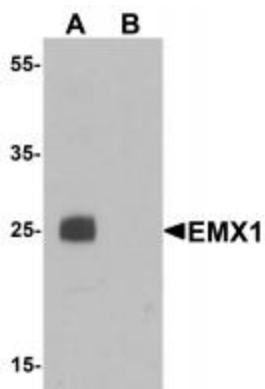
Product data:

Product Type:	Primary Antibodies
Applications:	WB
Recommended Dilution:	WB: 1 ug/mL
Reactivity:	Human, Mouse, Rat
Host:	Chicken
Isotype:	IgY
Clonality:	Polyclonal
Immunogen:	EMX1 antibody was raised against a 16 amino acid synthetic peptide near the amino terminus of human EMX1.
Formulation:	EMX1 Antibody is supplied in PBS containing 0.02% sodium azide.
Concentration:	1ug/ul
Purification:	EMX1 Antibody is affinity chromatography purified via peptide column.
Conjugation:	Unconjugated
Storage:	Store at -20°C as received.
Stability:	Stable for 12 months from date of receipt.
Gene Name:	empty spiracles homeobox 1
Database Link:	NP_004088 Entrez Gene 13796 Mouse Entrez Gene 500235 Rat Entrez Gene 2016 Human Q04741
Background:	EMX1 Antibody: EMX1 is a homeobox transcription factor involved in specifying cell fates in the developing central nervous system and it participates in the development of olfactory neurons. EMX1 is specifically expressed in the developing telencephalic cortex expression, where expression is restricted to pyramidal neurons. EMX1 is a reliable marker of pyramidal neurons and pyramidal cell lineage. EMX1 has been shown to be one of the downstream target genes for Gli-Kruppel family member 3 (Gli3) transcription factor, which is a part of the Sonic hedgehog-Patched-Gli signaling pathway important in endocrine signaling.
Synonyms:	empty spiracles homeobox 1; empty spiracles homolog 1
Protein Families:	Druggable Genome, ES Cell Differentiation/IPS



[View online »](#)

Product images:



Western blot analysis of EMX1 in rat liver tissue lysate with EMX1 antibody at 1 ug/mL in (A) the absence and (B) the presence of blocking peptide.