

## Product datasheet for **TA319637**

### DYRK1A Rabbit Polyclonal Antibody

#### Product data:

Product Type:	Primary Antibodies
Applications:	IF, WB
Recommended Dilution:	WB: 1 - 2 ug/mL, ICC: 10 ug/mL
Reactivity:	Human, Mouse, Rat
Host:	Rabbit
Isotype:	IgG
Clonality:	Polyclonal
Immunogen:	DYRK1A antibody was raised against a 17 amino acid synthetic peptide near the carboxy terminus of human DYRK1A. The immunogen is located within the last 50 amino acids of DYRK1A.
Formulation:	DYRK1A Antibody is supplied in PBS containing 0.02% sodium azide.
Concentration:	1ug/ul
Purification:	DYRK1A Antibody is affinity chromatography purified via peptide column.
Conjugation:	Unconjugated
Storage:	Store at -20°C as received.
Stability:	Stable for 12 months from date of receipt.
Gene Name:	dual specificity tyrosine phosphorylation regulated kinase 1A
Database Link:	<a href="#">NP_001387</a> <a href="#">Entrez Gene 13548 Mouse</a> <a href="#">Entrez Gene 25255 Rat</a> <a href="#">Entrez Gene 1859 Human</a> <a href="#">Q13627</a>
Background:	DYRK1A Antibody: DYRK1A is a member of the dual-specificity tyrosine phosphorylation-regulated kinase (DYRK) family and is thought to be involved in neuronal differentiation, neurodegenerative diseases, and is considered to be a strong candidate gene for learning defects associated with Down syndrome. DYRK1A phosphorylates several transcription factors such as p53, leading to inhibition of embryonic neuronal cell proliferation. DYRK1A associates with multiple proteins, including SPRED1 and SPRED2; this association appears to inhibit the phosphorylation activity of DYRK1A. Recent evidence also suggests that DYRK1A may be involved in the replication of HIV-1.

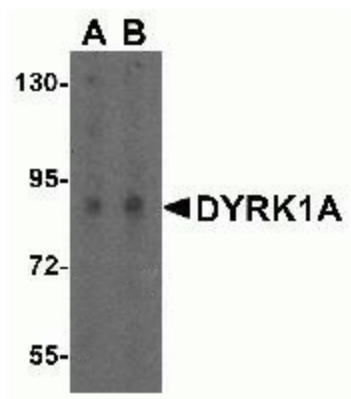


[View online »](#)

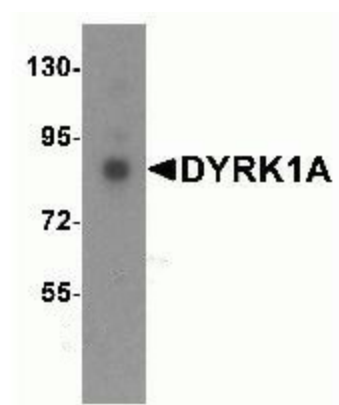
Synonyms: DYRK; DYRK1; HP86; MNB; MNBH; MRD7

Protein Families: Druggable Genome, Protein Kinase

### Product images:



Western blot analysis of DYRK1A in HeLa cell lysate with DYRK1A antibody at (A) 1 and (B) 2ug/ml.



Western blot analysis of DYRK1A expression in K562 cell lysate with DYRK1A antibody at (A) 1 and (B) 2ug/ml.



Immunocytochemistry of DYRK1A in HeLa cells with DYRK1A antibody at 10ug/ml.