

Product datasheet for **TA319636**

TSC22D3 Rabbit Polyclonal Antibody

Product data:

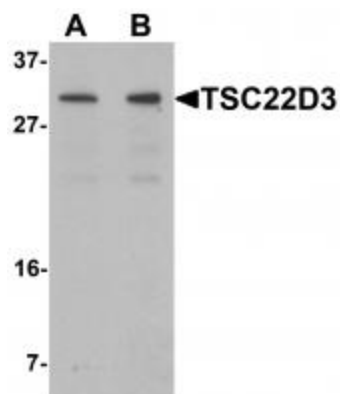
| | |
|-------------------------|--|
| Product Type: | Primary Antibodies |
| Applications: | IF, IHC, WB |
| Recommended Dilution: | WB: 1 - 2 ug/mL |
| Reactivity: | Human, Mouse |
| Host: | Rabbit |
| Isotype: | IgG |
| Clonality: | Polyclonal |
| Immunogen: | Rabbit polyclonal TSC22D3 antibody was raised against a 16 amino acid peptide near the amino terminus of human TSC22D3. |
| Formulation: | TSC22D3 Antibody is supplied in PBS containing 0.02% sodium azide. |
| Concentration: | 1ug/ul |
| Purification: | TSC22D3 Antibody is affinity chromatography purified via peptide column. |
| Conjugation: | Unconjugated |
| Storage: | Store at -20°C as received. |
| Stability: | Stable for 12 months from date of receipt. |
| Predicted Protein Size: | 22 kDa |
| Gene Name: | TSC22 domain family member 3 |
| Database Link: | NP_932174 Entrez Gene 1831 Human Q99576 |
| Background: | TSC22D3 Antibody: The TSC22 domain family member 3 protein (TSC22D3) is a leucine zipper protein that functions as a transcriptional regulator. The expression of TSC22D3 is stimulated by glucocorticoids and IL-10 and is thought to play a key role in the anti-inflammatory and immunosuppressive effects of these molecules. TSC22D3 can physically interact with and inhibit the activities of key inflammatory signaling mediators such NF-κB and AP-1. TSC22D3 functions as a transcriptional co-activator for various nuclear receptors and NF-κB. It has also been shown to be involved in the differentiation of mesenchymal stem cells towards osteoblasts and bone formation. |



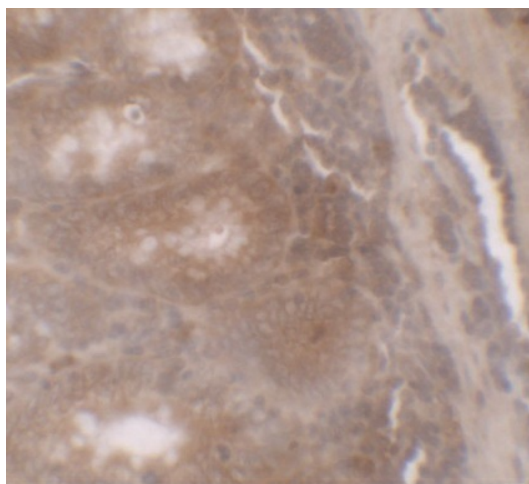
[View online »](#)

Synonyms: DIP; DSIPI; GILZ; TSC-22R

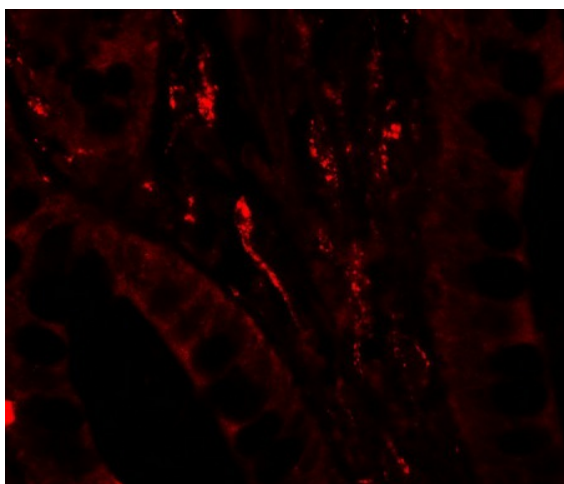
Product images:



Western blot analysis of TSC22D3 in human small intestine tissue lysate with TSC22D3 antibody at (A) 1 and (B) 2 ug/mL.



Immunohistochemistry of TSC22D3 in human small intestine tissue with TSC22D3 antibody at 5 ug/mL.



Immunofluorescence of TSC22D3 in human small intestine tissue with TSC22D3 antibody at 20 ug/mL.