

Product datasheet for **TA319634**

SEPTIN1 Rabbit Polyclonal Antibody

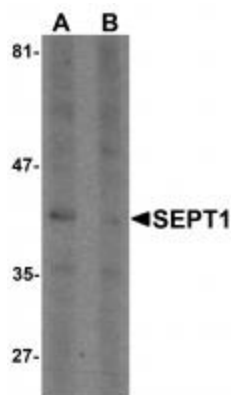
Product data:

Product Type:	Primary Antibodies
Applications:	IF, WB
Recommended Dilution:	WB: 1 ug/mL, ICC: 5 ug/mL, IF: 5 ug/mL
Reactivity:	Human, Mouse, Rat
Host:	Rabbit
Isotype:	IgG
Clonality:	Polyclonal
Immunogen:	SEPT1 antibody was raised against a 17 amino acid synthetic peptide near the carboxy terminus of human SEPT1.
Formulation:	SEPT1 Antibody is supplied in PBS containing 0.02% sodium azide.
Concentration:	1ug/ul
Purification:	SEPT1 Antibody is affinity chromatography purified via peptide column.
Conjugation:	Unconjugated
Storage:	Store at -20°C as received.
Stability:	Stable for 12 months from date of receipt.
Gene Name:	septin 1
Database Link:	NP_443070 Entrez Gene 54204 Mouse Entrez Gene 293507 Rat Entrez Gene 1731 Human Q8WYJ6
Background:	SEPT1 Antibody: SEPT1 (also known as Septin 1), is a member of the septin family of GTPases. Members of this family are required for cytokinesis and the maintenance of cellular morphology. SEPT1 was initially identified through yeast two-hybrid screening as an interaction partner for the serine/threonine kinase Aurora-B. During mitosis, SEPT1 localizes to the spindle pole, suggesting that it may play a role in cytokinesis and chromosome congression.
Synonyms:	DIFF6; LARP; PNUTL3; SEP1

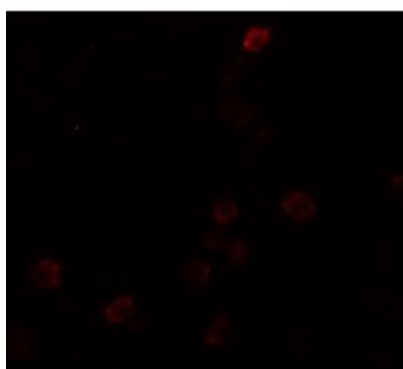


[View online »](#)

Product images:



Western blot analysis of SEPT1 in Raji cell lysate with SEPT1 antibody at 1 ug/ml in (A) the absence and (B) the presence of blocking peptide.



Immunofluorescence of SEPT1 in Raji cells with SEPT1 antibody at 20 ug/mL.



Immunocytochemistry of SEPT1 in Raji cells with SEPT1 antibody at 5 ug/mL.