

## Product datasheet for TA319632

### Claudin 4 (CLDN4) Rabbit Polyclonal Antibody

#### Product data:

Product Type:	Primary Antibodies
Applications:	IF, WB
Recommended Dilution:	WB: 1 ug/mL, IF: 20 ug/mL
Reactivity:	Human, Mouse, Rat
Host:	Rabbit
Isotype:	IgG
Clonality:	Polyclonal
Immunogen:	CLAUDIN4 antibody was raised against a 17 amino acid synthetic peptide near the carboxy terminus of human CLAUDIN4.
Formulation:	CLAUDIN4 Antibody is supplied in PBS containing 0.02% sodium azide.
Concentration:	1ug/ul
Purification:	CLAUDIN4 Antibody is affinity chromatography purified via peptide column.
Conjugation:	Unconjugated
Storage:	Store at -20°C as received.
Stability:	Stable for 12 months from date of receipt.
Predicted Protein Size:	23 kDa
Gene Name:	claudin 4
Database Link:	<a href="#">NP_001296</a> <a href="#">Entrez Gene 12740 MouseEntrez Gene 304407 RatEntrez Gene 1364 Human O14493</a>
Background:	CLAUDIN4 Antibody: CLAUDIN4 is an integral membrane protein belonging to the claudin family, a family of cellular adhesion molecules that are components of tight junctions. CLAUDIN4 is a component of tight junction strands and may play a role in internal organ development and function during pre- and postnatal life. The CLAUDIN4 gene is deleted in Williams-Beuren syndrome, a neurodevelopmental disorder affecting multiple systems. CLAUDIN4 is frequently overexpressed in ovarian and other epithelial cancers.
Synonyms:	CPE-R; CPER; CPETR; CPETR1; hCPE-R; WBSCR8

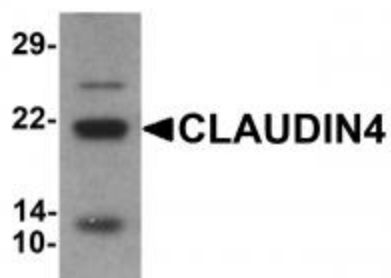


[View online »](#)

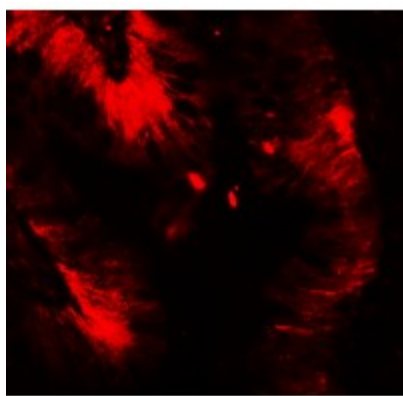
Protein Families: Druggable Genome, Transmembrane

Protein Pathways: Cell adhesion molecules (CAMs), Leukocyte transendothelial migration, Tight junction

### Product images:



Western blot analysis of CLAUDIN4 in human colon tissue lysate with CLAUDIN4 antibody at 1 ug/ml



Immunofluorescence of CLAUDIN4 in human colon tissue with CLAUDIN4 antibody at 20 ug/mL.