

## Product datasheet for **TA319631**

### AP3S1 Rabbit Polyclonal Antibody

#### Product data:

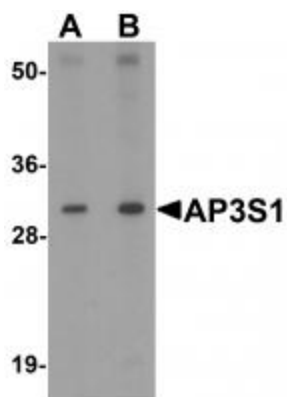
Product Type:	Primary Antibodies
Applications:	IF, IHC, WB
Recommended Dilution:	WB: 1 - 2 ug/mL, ICC: 2.5 ug/mL, IF: 20 ug/mL
Reactivity:	Human, Mouse, Rat
Host:	Rabbit
Isotype:	IgG
Clonality:	Polyclonal
Immunogen:	AP3S1 antibody was raised against a 19 amino acid synthetic peptide near the center of human AP3S1.
Formulation:	AP3S1 Antibody is supplied in PBS containing 0.02% sodium azide.
Concentration:	1ug/ul
Purification:	AP3S1 Antibody is affinity chromatography purified via peptide column.
Conjugation:	Unconjugated
Storage:	Store at -20°C as received.
Stability:	Stable for 12 months from date of receipt.
Gene Name:	adaptor related protein complex 3 sigma 1 subunit
Database Link:	<a href="#">NP_001275</a> <a href="#">Entrez Gene 11777 Mouse</a> <a href="#">Entrez Gene 302290 Rat</a> <a href="#">Entrez Gene 1176 Human</a> <a href="#">Q92572</a>
Background:	AP3S1 Antibody: AP3S1 belongs to the adaptor complexes 3 (AP3) small subunit family which is not clathrin-associated. The complex is associated with the Golgi region as well as more peripheral structures. It facilitates the budding of vesicles from the Golgi membrane and may be directly involved in trafficking to lysosomes. AP3 is a heterotetramer composed of two large adaptins (AP3D1, AP3B1 or AP3B2), a medium adaptin (AP3M1 or AP3M2) and a small adaptin (APS1 or AP3S2). AP3S1 Interacts with AGAP1 and may play an important role in carcinoma.
Synonyms:	CLAPS3; Sigma3A
Protein Families:	Druggable Genome



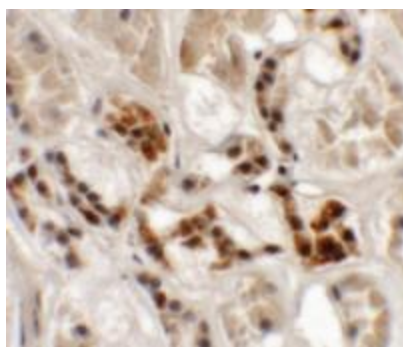
[View online »](#)

Protein Pathways: Lysosome

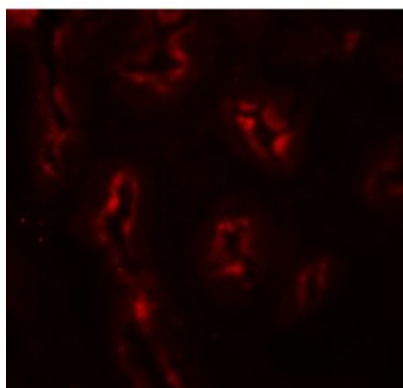
### Product images:



Western blot analysis of AP3S1 in mouse kidney tissue lysate with AP3S1 antibody at (A) 1 and (B) 2 ug/mL.



Immunohistochemistry of AP3S1 in human kidney tissue with AP3S1 antibody at 2.5 ug/mL.



Immunofluorescence of AP3S1 in human kidney tissue with AP3S1 antibody at 20 ug/mL.