

Product datasheet for **TA319630**

CEBPD Rabbit Polyclonal Antibody

Product data:

Product Type:	Primary Antibodies
Applications:	IF, WB
Recommended Dilution:	WB: 0.5 - 1 ug/mL, IF: 20 ug/mL
Reactivity:	Human, Mouse, Rat
Host:	Rabbit
Isotype:	IgG
Clonality:	Polyclonal
Immunogen:	Rabbit polyclonal CEBPD antibody was raised against an 18 amino acid peptide near the carboxy terminus of human CEBPD.
Formulation:	CEBPD Antibody is supplied in PBS containing 0.02% sodium azide.
Concentration:	1ug/ul
Purification:	CEBPD Antibody is affinity chromatography purified via peptide column.
Conjugation:	Unconjugated
Storage:	Store at -20°C as received.
Stability:	Stable for 12 months from date of receipt.
Predicted Protein Size:	30 kDa
Gene Name:	CCAAT/enhancer binding protein delta
Database Link:	NP_005186 Entrez Gene 12609 MouseEntrez Gene 25695 RatEntrez Gene 1052 Human P49716
Background:	CEBPD Antibody: CCAAT enhancer binding proteins (CEBPs) are a family of transcription factors that all contain a highly conserved, basic-leucine zipper domain at the C-terminus that is involved in dimerization and DNA binding. At least six members of the family have been isolated and characterized to date (CEBP alpha to CEBP zeta). CEBPD is a leucine zipper (LZ) DNA-binding protein that regulates gene expression in a variety of tissues including liver, adipose, lung and intestine. CEBPD is an important transcriptional activator in the regulation of genes involved in immune and inflammatory responses and has been reported to possess many tumor suppressor-like properties.

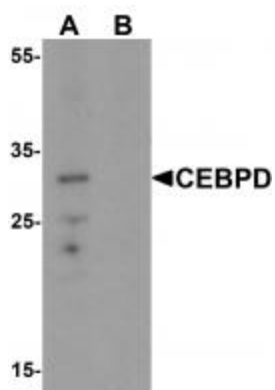


[View online »](#)

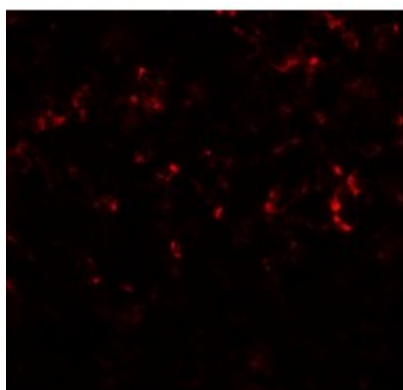
Synonyms: C; CELF; CRP3; EBP-delta; NF-IL6-beta

Protein Families: Druggable Genome, Transcription Factors

Product images:



Western blot analysis of CEBPD in rat spleen tissue lysate with CEBPD antibody at 0.5 ug/mL in (A) the absence and (B) the presence of blocking peptide.



Immunofluorescence of CEBPD in human spleen tissue with CEBPD antibody at 20 ug/mL.