

Product datasheet for **TA319629**

p57 Kip2 (CDKN1C) Rabbit Polyclonal Antibody

Product data:

Product Type:	Primary Antibodies
Applications:	IF, WB
Recommended Dilution:	WB: 1 - 2 ug/mL, IF: 20 ug/mL
Reactivity:	Human
Host:	Rabbit
Isotype:	IgG
Clonality:	Polyclonal
Immunogen:	CDKN1C antibody was raised against a 17 amino acid synthetic peptide near the amino terminus of human CDKN1C.
Formulation:	CDKN1C Antibody is supplied in PBS containing 0.02% sodium azide.
Concentration:	1ug/ul
Purification:	CDKN1C Antibody is affinity chromatography purified via peptide column.
Conjugation:	Unconjugated
Storage:	Store at -20°C as received.
Stability:	Stable for 12 months from date of receipt.
Predicted Protein Size:	35 kDa
Gene Name:	cyclin-dependent kinase inhibitor 1C
Database Link:	NP_000067 Entrez Gene 1028 Human P49918
Background:	CDKN1C Antibody: The cyclin-dependent kinase inhibitor 1C (CDKN1C), also known as p57KIP2, is a tight-binding, strong inhibitor of several G1 cyclin/CDK complexes and a negative regulator of cell proliferation. Mutations in this gene are implicated in sporadic cancers and Beckwith-Wiedemann syndrome, a cancer-predisposing syndrome, suggesting that this gene is a tumor suppressor candidate. CDKN1C is widely expressed during organogenesis with its expression declining after maturity. It is part of the CIP/KIP family of cyclin-dependent inhibitors (CKIs) which also includes CDKN1A and CDKN1B.
Synonyms:	BWCR; BWS; KIP2; p57; p57Kip2; WBS

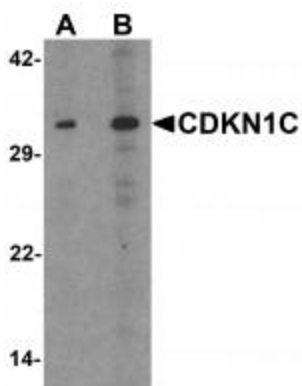


[View online »](#)

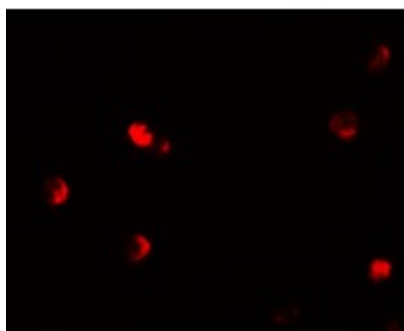
Protein Families: Druggable Genome

Protein Pathways: Cell cycle

Product images:



Western blot analysis of CDKN1C in 293 cell lysate with CDKN1C antibody at (A) 1 and (B) 2 ug/mL.



Immunofluorescence of CDKN1C in 293 cells with CDKN1C antibody at 20 ug/mL.