

Product datasheet for **TA319628**

CD59 Rabbit Polyclonal Antibody

Product data:

Product Type:	Primary Antibodies
Applications:	WB
Recommended Dilution:	WB: 1 - 2 ug/mL
Reactivity:	Human, Mouse
Host:	Rabbit
Isotype:	IgG
Clonality:	Polyclonal
Immunogen:	Rabbit polyclonal CD59 antibody was raised against a 14 amino acid peptide near the amino terminus of human CD59.
Formulation:	CD59 Antibody is supplied in PBS containing 0.02% sodium azide.
Concentration:	1ug/ul
Purification:	CD59 Antibody is affinity chromatography purified via peptide column.
Conjugation:	Unconjugated
Storage:	Store at -20°C as received.
Stability:	Stable for 12 months from date of receipt.
Predicted Protein Size:	14 kDa
Gene Name:	CD59 molecule
Database Link:	NP_000602 Entrez Gene 966 Human P13987

Background: CD59 Antibody: The complement regulatory protein CD59 is a cell surface glycoprotein that regulates complement-mediated cell lysis and is involved in lymphocyte signal transduction. CD59 is a potent inhibitor of the complement membrane attack complex, whereby it binds complement C8 and/or C9 during the assembly of this complex, thereby inhibiting the incorporation of multiple copies of C9 into the complex, which is necessary for osmolytic pore formation. CD59 also plays a role in signal transduction pathways in the activation of T cells. Mutations in this gene cause CD59 deficiency, a disease resulting in hemolytic anemia and thrombosis, and ultimately cerebral infarction.



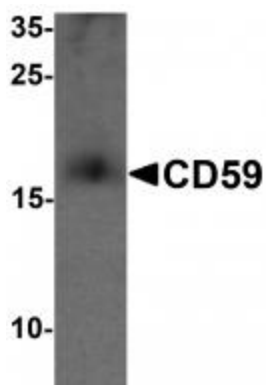
[View online »](#)

Synonyms: 1F5; 16.3A5; EJ16; EJ30; EL32; G344; HRF-20; HRF20; MAC-IP; MACIF; MEM43; MIC11; MIN1; MIN2

Protein Families: Druggable Genome

Protein Pathways: Complement and coagulation cascades, Hematopoietic cell lineage

Product images:



Western blot analysis of CD59 in mouse spleen tissue lysate with CD59 antibody at 1 ug/mL