

Product datasheet for **TA319627**

CD48 Rabbit Polyclonal Antibody

Product data:

Product Type:	Primary Antibodies
Applications:	WB
Recommended Dilution:	WB: 1 - 2 ug/mL
Reactivity:	Human, Mouse, Rat
Host:	Rabbit
Isotype:	IgG
Clonality:	Polyclonal
Immunogen:	SLAMF2 antibody was raised against a 19 amino acid synthetic peptide near the center of human SLAMF2.
Formulation:	SLAMF2 Antibody is supplied in PBS containing 0.02% sodium azide.
Concentration:	1ug/ul
Purification:	SLAMF2 Antibody is affinity chromatography purified via peptide column.
Conjugation:	Unconjugated
Storage:	Store at -20°C as received.
Stability:	Stable for 12 months from date of receipt.
Gene Name:	CD48 molecule
Database Link:	NP_001769 Entrez Gene 12506 Mouse Entrez Gene 245962 Rat Entrez Gene 962 Human P09326
Background:	SLAMF2 Antibody: The signaling lymphocyte-activation molecule family member 2 (SLAMF2), also known as CD48, is a GPI-anchored protein that exists as both a soluble and membrane-associated form and is expressed in almost all leukocyte populations particularly in mitogen-stimulated human lymphocytes. SLAMF2 is a high-affinity ligand for SLAMF4, also known as 2B4, as well as a low-affinity ligand for CD2, and can thus stimulate cells expressing these receptors. It has been shown to be an IL-3-induced activating receptor on eosinophils and is likely to be involved in promoting allergic inflammation. SLAMF2 is also thought to be involved in the IL-18/IL-18R signaling cascade in T and natural killer cells to produce interferon-gamma.



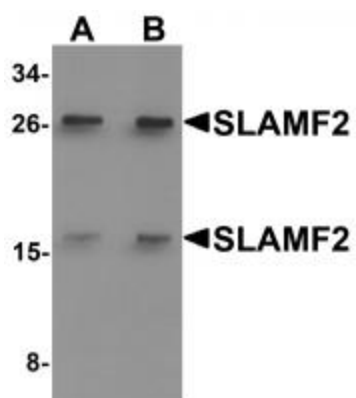
[View online »](#)

Synonyms: BCM1; BLAST; BLAST1; hCD48; mCD48; MEM-102; SLAMF2

Protein Families: Druggable Genome, Transmembrane

Protein Pathways: Natural killer cell mediated cytotoxicity

Product images:



Western blot analysis of SLAMF2 in rat lung tissue lysate with SLAMF2 antibody at (A) 1 and (B) 2 ug/mL.