

Product datasheet for **TA319626**

CD33 Rabbit Polyclonal Antibody

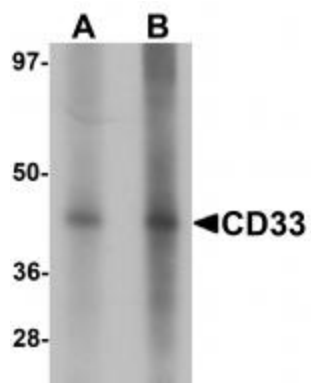
Product data:

Product Type:	Primary Antibodies
Applications:	WB
Recommended Dilution:	WB: 1 - 2 ug/mL
Reactivity:	Human, Mouse, Rat
Host:	Rabbit
Isotype:	IgG
Clonality:	Polyclonal
Immunogen:	CD33 antibody was raised against a 14 amino acid synthetic peptide near the center of human CD33.
Formulation:	CD33 Antibody is supplied in PBS containing 0.02% sodium azide.
Concentration:	1ug/ul
Purification:	CD33 Antibody is affinity chromatography purified via peptide column.
Conjugation:	Unconjugated
Storage:	Store at -20°C as received.
Stability:	Stable for 12 months from date of receipt.
Gene Name:	CD33 molecule
Database Link:	NP_001763 Entrez Gene 945 Human P20138
Background:	CD33 Antibody: CD33 is a member of the sialic acid-binding immunoglobulin-like lectin (Siglec) family that is highly expressed on myeloid progenitor cells. Assessment of CD33 expression is of great importance in the immunodiagnosis of acute leukemia, allowing distinction between myeloid and lymphoid origin, as CD33 is generally restricted to the myelomonocytic lineage. CD33 can associate with the protein-tyrosine phosphatases SHP-1 and SHP-2 and thus could modulate downstream signaling events associated with cell activation. Common variants of CD33 have been found to be associated with late-onset Alzheimer's disease.
Synonyms:	p67; SIGLEC-3; SIGLEC3



[View online »](#)

Product images:



Western blot analysis of CD33 in 3T3 cell lysate with CD33 antibody at (A) 1 and (B) 2 ug/mL.