

Product datasheet for **TA319623**

FMNL1 Rabbit Polyclonal Antibody

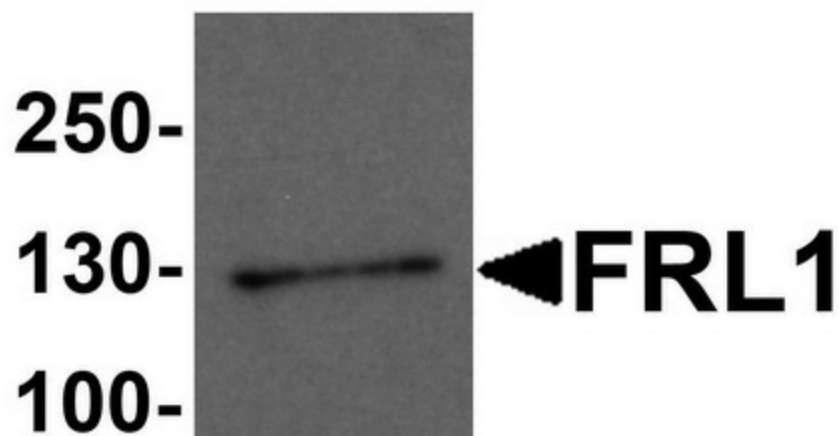
Product data:

Product Type:	Primary Antibodies
Applications:	IF, WB
Recommended Dilution:	WB: 1 - 2 ug/mL, IF: 20 ug/mL
Reactivity:	Human, Mouse, Rat
Host:	Rabbit
Isotype:	IgG
Clonality:	Polyclonal
Immunogen:	Rabbit polyclonal FRL1 antibody was raised against a 16 amino acid peptide near the carboxy terminus of human FRL1.
Formulation:	FRL1 Antibody is supplied in PBS containing 0.02% sodium azide.
Concentration:	1ug/ul
Purification:	FRL1 Antibody is affinity chromatography purified via peptide column.
Conjugation:	Unconjugated
Storage:	Store at -20°C as received.
Stability:	Stable for 12 months from date of receipt.
Predicted Protein Size:	121 kDa
Gene Name:	formin like 1
Database Link:	NP_005883 Entrez Gene 57778 MouseEntrez Gene 287746 RatEntrez Gene 752 Human O95466
Background:	FRL1 Antibody: The Formin-like protein 1 (FRL1) gene encodes a formin-related protein which has been implicated in morphogenesis, cytokinesis, and cell polarity. Formins are a conserved class of proteins expressed in all eukaryotes and have one DAD (diaphanous autoregulatory domain), one FH2 (formin homology 2) domain and one GBD/FH3 (Rho GTPase-binding / formin homology 3) domain. FRL1 is located in the cytoplasm and is highly expressed in the spleen, lymph node and bone marrow cells. FRL1 possibly has a role in the control of cell motility, survival of macrophages and cytoskeletal organization.
Synonyms:	C17orf1; C17orf1B; FHOD4; FMNL; KW-13

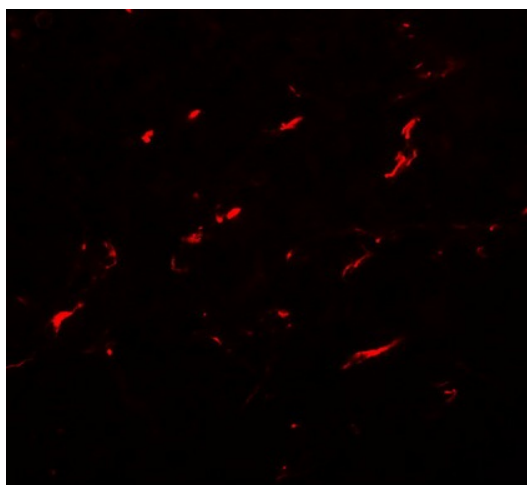


[View online »](#)

Product images:



Western blot analysis of FRL1 in EL4 cell lysate with FRL1 antibody at 1 ug/mL.



Immunofluorescence of FRL1 in EL4 cells with FRL1 antibody at 20 ug/mL.