

## Product datasheet for **TA319620**

### **bcl 6 (BCL6) Rabbit Polyclonal Antibody**

#### **Product data:**

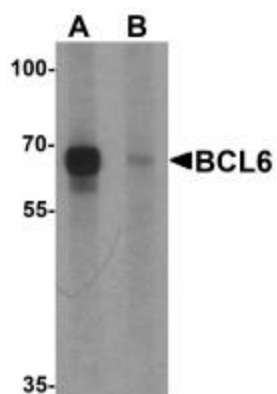
<b>Product Type:</b>	Primary Antibodies
<b>Applications:</b>	WB
<b>Recommended Dilution:</b>	WB: 1 ug/mL
<b>Reactivity:</b>	Human, Mouse, Rat
<b>Host:</b>	Rabbit
<b>Isotype:</b>	IgG
<b>Clonality:</b>	Polyclonal
<b>Immunogen:</b>	BCL6 antibody was raised against an 18 amino acid synthetic peptide near the center of human BCL6.
<b>Formulation:</b>	BCL6 Antibody is supplied in PBS containing 0.02% sodium azide.
<b>Concentration:</b>	1ug/ul
<b>Purification:</b>	BCL6 Antibody is affinity chromatography purified via peptide column.
<b>Conjugation:</b>	Unconjugated
<b>Storage:</b>	Store at -20°C as received.
<b>Stability:</b>	Stable for 12 months from date of receipt.
<b>Predicted Protein Size:</b>	78 kDa
<b>Gene Name:</b>	B-cell CLL/lymphoma 6
<b>Database Link:</b>	<a href="#">NP_001124317</a> <a href="#">Entrez Gene 12053 MouseEntrez Gene 303836 RatEntrez Gene 604 Human P41182</a>
<b>Background:</b>	BCL6 Antibody: BCL6 was first identified as a proto-oncogene in diffuse large B cell lymphoma. BCL6, a transcriptional repressor, plays an important role in lymphomagenesis. It binds Stat recognition-like DNA elements and is required for affinity maturation of mature B cells in germinal centers and Th1/Th2 differentiation, a process that critically depends on BCL6-mediated transcriptional repression of p53. BCL6 is a pharmacological target for eradication of leukemia-initiating cells in chronic myeloid leukemia (CML).
<b>Synonyms:</b>	BCL5; BCL6A; LAZ3; ZBTB27; ZNF51



[View online »](#)

Protein Families: Druggable Genome, Transcription Factors

**Product images:**



Western blot analysis of BCL6 in rat lung tissue lysate with Bcl6 antibody at 1 ug/ml in (A) the absence and (B) the presence of blocking peptide