

Product datasheet for **TA319619**

BCL3 Rabbit Polyclonal Antibody

Product data:

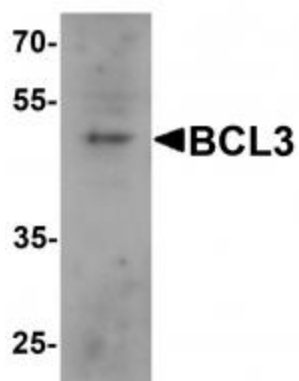
Product Type:	Primary Antibodies
Applications:	WB
Recommended Dilution:	WB: 1 - 2 ug/mL
Reactivity:	Human
Host:	Rabbit
Isotype:	IgG
Clonality:	Polyclonal
Immunogen:	Rabbit polyclonal BCL3 antibody was raised against a 17 amino acid peptide near the carboxy terminus of human BCL3.
Formulation:	BCL3 Antibody is supplied in PBS containing 0.02% sodium azide.
Concentration:	1ug/ul
Purification:	BCL3 Antibody is affinity chromatography purified via peptide column.
Conjugation:	Unconjugated
Storage:	Store at -20°C as received.
Stability:	Stable for 12 months from date of receipt.
Predicted Protein Size:	50 kDa
Gene Name:	B-cell CLL/lymphoma 3
Database Link:	NP_005169 Entrez Gene 602 Human P20749
Background:	BCL3 Antibody: The proto-oncogene Bcl-3, believed to be involved in certain human B cell leukemias, encodes a protein that contributes to the regulation of transcriptional activation of NF-κ-B target genes. BCL3 contains seven ankyrin repeats, which are most closely related to those found in I-κ-B proteins. The expression of this gene can be induced by NF-κ-B, which forms a part of the autoregulatory loop that controls the nuclear residence of p50 NF-κ-B. It contributes to the regulation of cell proliferation. A chromosomal aberration involving BCL3 may be a cause of B-cell chronic lymphocytic leukemia.
Synonyms:	BCL4; D19S37



[View online »](#)

Protein Families: Druggable Genome, Transcription Factors

Product images:



Western blot analysis of BCL3 in 293 cell lysate with BCL3 antibody at 1 ug/mL.