

## Product datasheet for **TA319618**

### **BAPX1 (NKX3-2) Rabbit Polyclonal Antibody**

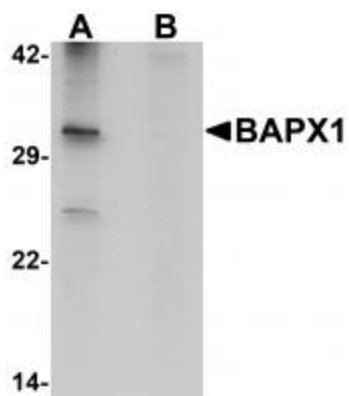
#### **Product data:**

<b>Product Type:</b>	Primary Antibodies
<b>Applications:</b>	IF, IHC, WB
<b>Recommended Dilution:</b>	WB: 1 - 2 ug/mL, ICC: 5 ug/mL, IF: 20 ug/mL
<b>Reactivity:</b>	Human, Mouse, Rat
<b>Host:</b>	Rabbit
<b>Isotype:</b>	IgG
<b>Clonality:</b>	Polyclonal
<b>Immunogen:</b>	BAPX1 antibody was raised against a 19 amino acid synthetic peptide near the center of human BAPX1.
<b>Formulation:</b>	BAPX1 Antibody is supplied in PBS containing 0.02% sodium azide.
<b>Concentration:</b>	1ug/ul
<b>Purification:</b>	BAPX1 Antibody is affinity chromatography purified via peptide column.
<b>Conjugation:</b>	Unconjugated
<b>Storage:</b>	Store at -20°C as received.
<b>Stability:</b>	Stable for 12 months from date of receipt.
<b>Gene Name:</b>	NK3 homeobox 2
<b>Database Link:</b>	<a href="#">NP_001180</a> <a href="#">Entrez Gene 12020 Mouse</a> <a href="#">Entrez Gene 682329 Rat</a> <a href="#">Entrez Gene 579 Human</a> <a href="#">P78367</a>
<b>Background:</b>	BAPX1 Antibody: BAPX1 is the mammalian homolog of the Drosophila bagpipe homeobox gene and is expressed in the splanchnic mesoderm and embryonic skeleton. It is one of the earliest developmental markers for the sclerotome portion of the somite and the gut mesentery. BAPX1 is required for normal skeletal development; homozygous inactivating mutations in the BAPX1 gene result in spodylo-megaepiphyseal-metaphyseal dysplasia (SMMD). It has also been suggested to play a role in the proper development of the mammalian gut and is required for distal stomach development as part of a BARX1-dependent pathway.
<b>Synonyms:</b>	BAPX1; NKX3.2; NKX3B; SMMD

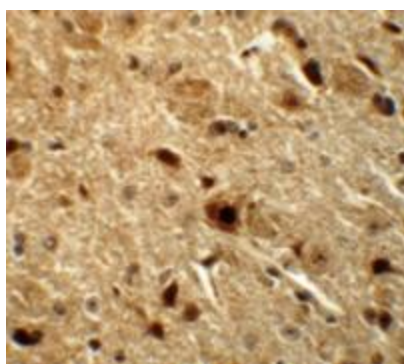


[View online »](#)

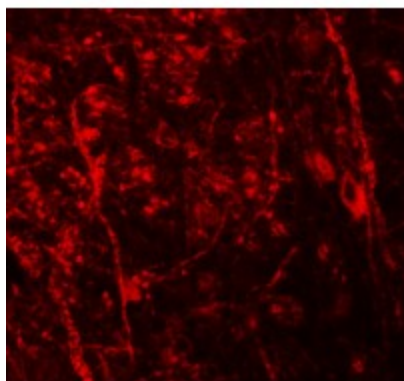
## Product images:



Western blot analysis of BAPX1 in human brain tissue lysate with BAPX1 antibody at 1 ug/mL in (A) the absence and (B) the presence of blocking peptide.



Immunohistochemistry of BAPX1 in mouse brain tissue with BAPX1 antibody at 5 ug/mL.



Immunofluorescence of BAPX1 in mouse brain tissue with BAPX1 antibody at 20 ug/mL.