

Product datasheet for **TA319616**

PHOX2A Rabbit Polyclonal Antibody

Product data:

| | |
|-----------------------|--|
| Product Type: | Primary Antibodies |
| Applications: | IF, IHC, WB |
| Recommended Dilution: | WB: 1 ug/mL, ICC: 2.5 ug/mL |
| Reactivity: | Human, Mouse, Rat |
| Host: | Rabbit |
| Isotype: | IgG |
| Clonality: | Polyclonal |
| Immunogen: | PHOX2A antibody was raised against a 16 amino acid synthetic peptide near the carboxy terminus of human PHOX2A. |
| Formulation: | PHOX2A Antibody is supplied in PBS containing 0.02% sodium azide. |
| Concentration: | 1ug/ul |
| Purification: | PHOX2A Antibody is affinity chromatography purified via peptide column. |
| Conjugation: | Unconjugated |
| Storage: | Store at -20°C as received. |
| Stability: | Stable for 12 months from date of receipt. |
| Gene Name: | paired like homeobox 2a |
| Database Link: | NP_005160 Entrez Gene 11859 Mouse Entrez Gene 116648 Rat Entrez Gene 401 Human O14813 |
| Background: | PHOX2A Antibody: PHOX2A and PHOX2B (Paired mesoderm homeobox protein) are closely related, paired-homeodomain transcription factors that function as determinants of the noradrenergic phenotype during embryogenesis. PHOX2 proteins are crucial for the regulation of endogenous hydroxylases in neural crest cells and promote sympathetic neuron generation. Human PHOX2B contains one DNA binding homeobox domain and is required for the differentiation of all central and nonperipheral noradrenergic centers in the brain. In contrast, PHOX2A controls only the differentiation of the main noradrenergic center of the brain. Regulation of PHOX2 may have therapeutic utility in aging or disorders involving degeneration of noradrenergic neurons. |

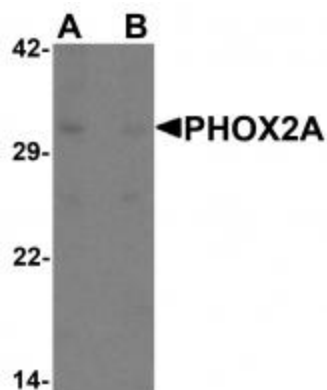


[View online »](#)

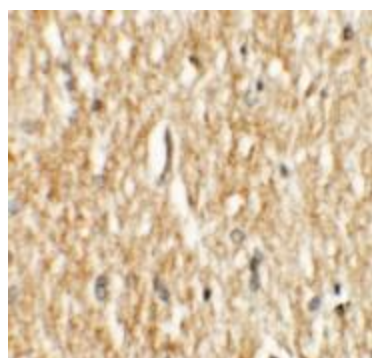
Synonyms: ARIX; CFEOM2; FEOM2; NCAM2; PMX2A

Protein Families: Transcription Factors

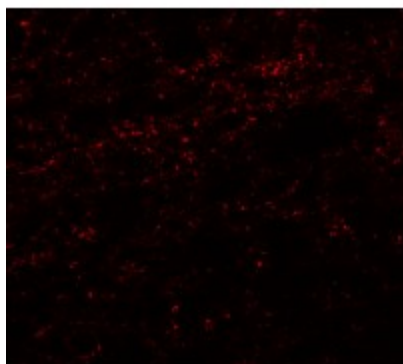
Product images:



Western blot analysis of PHOX2A in rat brain tissue lysate with PHOX2A antibody at 1 ug/ml in (A) the absence and (B) the presence of blocking peptide.



Immunohistochemistry of PHOX2A in human brain tissue with PHOX2A antibody at 2.5 ug/mL.



Immunofluorescence of PHOX2A in human brain tissue with PHOX2A antibody at 20 ug/mL.