

Product datasheet for **TA319615**

Apolipoprotein A I (APOA1) Rabbit Polyclonal Antibody

Product data:

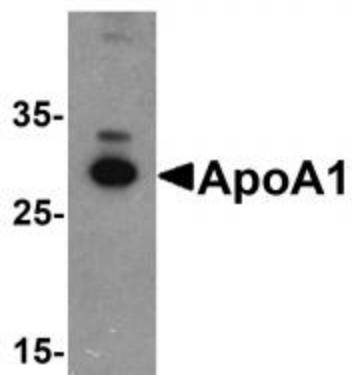
Product Type:	Primary Antibodies
Applications:	WB
Recommended Dilution:	WB: 1 ug/mL
Reactivity:	Human, Chicken
Host:	Rabbit
Isotype:	IgG
Clonality:	Polyclonal
Immunogen:	ApoA1 antibody was raised against a 19 amino acid synthetic peptide near the carboxy terminus of human ApoA1.
Formulation:	ApoA1 Antibody is supplied in PBS containing 0.02% sodium azide.
Concentration:	1ug/ul
Purification:	ApoA1 Antibody is affinity chromatography purified via peptide column.
Conjugation:	Unconjugated
Storage:	Store at -20°C as received.
Stability:	Stable for 12 months from date of receipt.
Gene Name:	apolipoprotein A1
Database Link:	NP_000030 Entrez Gene 335 Human P02647
Background:	ApoA1 Antibody: Apolipoprotein A1 (ApoA1) is the major protein component of high density lipoprotein (HDL) in plasma, which is correlated with cardiovascular disease. ApoA1 is synthesized in the liver and small intestine and promotes cholesterol efflux from tissues to the liver for excretion. It is a cofactor for lecithin cholesterolacyltransferase (LCAT), the enzyme responsible for the formation of most plasma cholesteryl esters. Defects in ApoA1 are associated with HDL deficiency, Tangier disease, and systemic non-neuropathic amyloidosis.
Synonyms:	apo(a)
Protein Families:	Druggable Genome, Secreted Protein



[View online »](#)

Protein Pathways: PPAR signaling pathway

Product images:



Western blot analysis of ApoA1 in chicken liver tissue lysate with ApoA1 antibody at 1 ug/mL.