

Product datasheet for **TA319614**

APBA2 Rabbit Polyclonal Antibody

Product data:

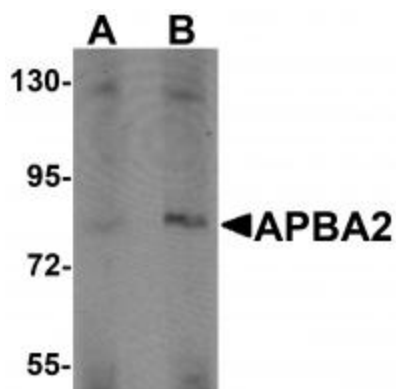
Product Type:	Primary Antibodies
Applications:	IF, IHC, WB
Recommended Dilution:	WB: 1 - 2 ug/mL, ICC: 10 ug/mL, IF: 20 ug/mL
Reactivity:	Human
Host:	Rabbit
Isotype:	IgG
Clonality:	Polyclonal
Immunogen:	APBA2 antibody was raised against an 18 amino acid synthetic peptide near the center of human APBA2.
Formulation:	APBA2 Antibody is supplied in PBS containing 0.02% sodium azide.
Concentration:	1ug/ul
Purification:	APBA2 Antibody is affinity chromatography purified via peptide column.
Conjugation:	Unconjugated
Storage:	Store at -20°C as received.
Stability:	Stable for 12 months from date of receipt.
Gene Name:	amyloid beta precursor protein binding family A member 2
Database Link:	NP_005494 Entrez Gene 321 Human Q99767
Background:	APBA2 Antibody: APBA2, a member of the X11 protein family, is a phosphotyrosine-binding domain protein and is a neuronal adapter protein that interacts with amyloid precursor protein (APP) and neuritic plaques in the brains of patients with Alzheimer's disease. It stabilizes APP and inhibits production of proteolytic APP fragments including the Abeta peptide that is deposited in the brains of Alzheimer's disease patients. APBA2 is believed to be involved in signal transduction processes and is also regarded as a putative vesicular trafficking protein in the brain that can form a complex with the potential to couple synaptic vesicle exocytosis to neuronal cell adhesion. Recent reports suggest that it may also be a candidate gene for autism.



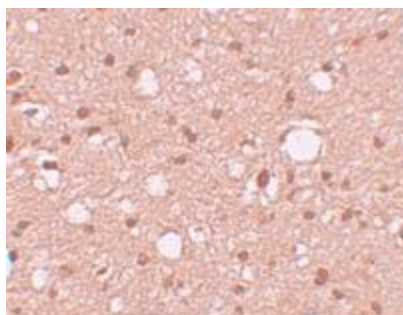
[View online »](#)

Synonyms: D15S1518E; HsT16821; LIN-10; MGC:14091; MINT2; X11-BETA; X11L

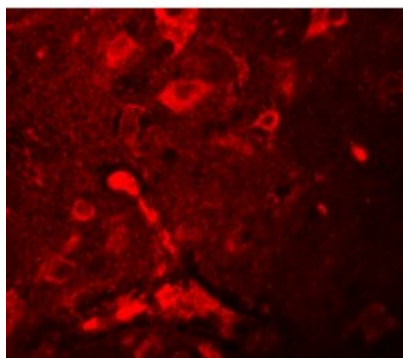
Product images:



Western blot analysis of APBA2 in human brain tissue lysate with APBA2 antibody at (A) 1 and (B) 2 ug/mL.



Immunohistochemistry of APBA2 in human brain tissue with APBA2 antibody at 10 ug/mL.



Immunofluorescence of APBA2 in human brain tissue with APBA2 antibody at 20 ug/mL.