

## Product datasheet for **TA319613**

### APBA1 Rabbit Polyclonal Antibody

#### Product data:

|                         |   |
|-------------------------|---|
| Product Type:           | Primary Antibodies  |
| Applications:           | IF, WB  |
| Recommended Dilution:   | WB: 0.5 ug/mL, IF: 20 ug/mL   |
| Reactivity:             | Human, Mouse, Rat   |
| Host:                   | Rabbit  |
| Isotype:                | IgG   |
| Clonality:              | Polyclonal  |
| Immunogen:              | APBA1 antibody was raised against a 19 amino acid synthetic peptide near the amino terminus of human APBA1.   |
| Formulation:            | APBA1 Antibody is supplied in PBS containing 0.02% sodium azide.  |
| Concentration:          | 1ug/ul  |
| Purification:           | APBA1 Antibody is affinity chromatography purified via peptide column.  |
| Conjugation:            | Unconjugated  |
| Storage:                | Store at -20°C as received.   |
| Stability:              | Stable for 12 months from date of receipt.  |
| Predicted Protein Size: | 92 kDa  |
| Gene Name:              | amyloid beta precursor protein binding family A member 1  |
| Database Link:          | <a href="#">NP_001154</a><br><a href="#">Entrez Gene 83589 Rat</a> <a href="#">Entrez Gene 319924 Mouse</a> <a href="#">Entrez Gene 320 Human</a><br><a href="#">Q02410</a> |



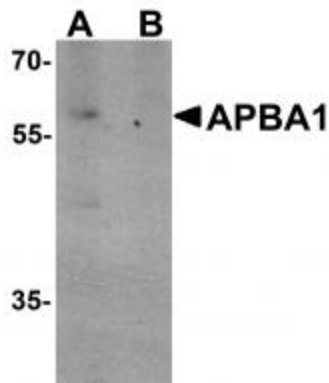
[View online »](#)

**Background:**

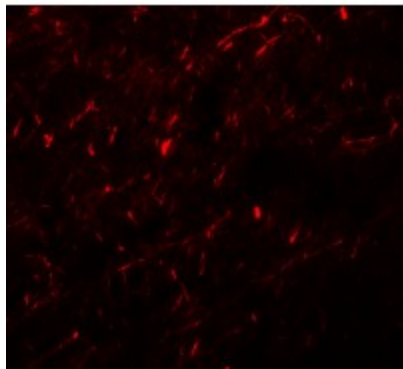
APBA1 Antibody: The Amyloid beta 4 (A4) precursor protein-binding family A member 1 (APBA1) is a member of the X11 protein family and a neuronal adapter protein that interacts with the Alzheimer's disease amyloid precursor protein (APP). APBA1 stabilizes APP and inhibits production of proteolytic APP fragments including the A $\beta$  peptide that is deposited in the brains of Alzheimer's disease patients. It is thought to be involved in signal transduction processes and is a putative vesicular trafficking protein in the brain that can form a complex with the potential to couple synaptic vesicle exocytosis to neuronal cell adhesion. APBA1 can also bind to CASK, a multidomain scaffolding protein involved in brain development and synapse formation.

**Synonyms:**

D9S411E; LIN10; MINT1; X11; X11A; X11ALPHA

**Product images:**

Western blot analysis of APBA1 in rat brain tissue lysate with APBA1 antibody at 0.5 ug/ml in (A) the absence and (B) the presence of blocking peptide.



Immunofluorescence of APBA1 in human brain tissue with APBA1 antibody at 20 ug/mL.