

Product datasheet for **TA319612**

APAF1 Mouse Monoclonal Antibody [Clone ID: 5E11]

Product data:

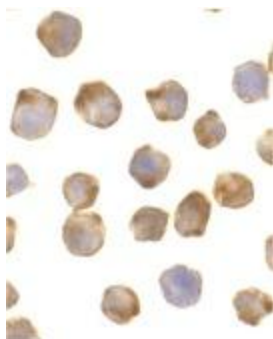
Product Type:	Primary Antibodies
Clone Name:	5E11
Applications:	IHC
Recommended Dilution:	ICC: 0.5 mg/mL
Reactivity:	Human, Mouse, Rat
Host:	Mouse
Clonality:	Monoclonal
Immunogen:	A peptide corresponding to amino acids near the carboxy terminus of human Apaf1.
Formulation:	Apaf-1 Monoclonal Antibody is supplied in PBS containing 0.02% sodium azide.
Concentration:	1ug/ul
Purification:	Apaf-1 Monoclonal Antibody is immunoaffinity chromatography purified IgG.
Conjugation:	Unconjugated
Storage:	Store at -20°C as received.
Stability:	Stable for 12 months from date of receipt.
Gene Name:	apoptotic peptidase activating factor 1
Database Link:	AAC51678 Entrez Gene 317 Human O14727
Background:	Apaf-1 Monoclonal Antibody: Apoptosis is related to many diseases and induced by a family of cell death receptors and their ligands. Cell death signals are transduced by death domain containing adapter molecules and members of the caspase family of proteases. The mammalian homologous of the key cell death gene CED-4 in <i>C. elegans</i> was identified recently from human and mouse and designated Apaf1 for apoptosis protease-activating factor 1. Apaf1 binds to cytochrome c (Apaf2) and caspase-9 (Apaf3), which leads to caspase-9 activation. Activated caspase-9 in turn cleaves and activates caspase-3 that is one of the key proteases, being responsible for the proteolytic cleavage of many key proteins in apoptosis. Apaf1 can also associate with caspase-4 and caspase-8. Apaf1 transcript is ubiquitously expressed in human tissues.



[View online »](#)

Synonyms: APAF-1; CED4

Product images:



Immunohistochemistry of Apaf1 in K562 cells with Apaf1 antibody at 0.5 ug/mL.