

## Product datasheet for **TA319608**

### alpha 1 Fetoprotein (AFP) Rabbit Polyclonal Antibody

#### Product data:

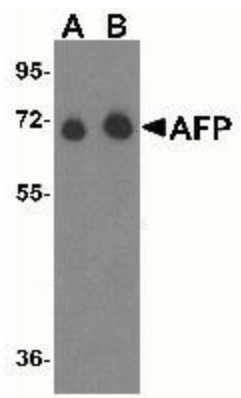
Product Type:	Primary Antibodies
Applications:	IF, IHC, WB
Recommended Dilution:	WB: 1 ug/mL, ICC: 10 ug/mL, IF: 20 ug/mL
Reactivity:	Human, Mouse, Rat
Host:	Rabbit
Isotype:	IgG
Clonality:	Polyclonal
Immunogen:	AFP antibody was raised against a 14 amino acid synthetic peptide near the amino terminus of human AFP. The immunogen is located within amino acids 340 - 390 of AFP.
Formulation:	AFP Antibody is supplied in PBS containing 0.02% sodium azide.
Concentration:	1ug/ul
Purification:	AFP Antibody is affinity chromatography purified via peptide column.
Conjugation:	Unconjugated
Storage:	Store at -20°C as received.
Stability:	Stable for 12 months from date of receipt.
Gene Name:	alpha fetoprotein
Database Link:	<a href="#">NP_001125</a> <a href="#">Entrez Gene 11576 Mouse</a> <a href="#">Entrez Gene 24177 Rat</a> <a href="#">Entrez Gene 174 Human</a> <a href="#">P02771</a>
Background:	AFP Antibody: Alpha-fetoprotein (AFP) is a major plasma protein produced by the yolk sac and the liver during fetal development. In adults, AFP expression is often associated with hepatoma or teratoma. However, hereditary persistence of AFP may also be found in individuals with no obvious pathology. AFP is thought to be the fetal counterpart of serum albumin, and the AFP and albumin genes are present in tandem in the same transcriptional orientation on chromosome 4. AFP is found in monomeric as well as dimeric and trimeric forms, and binds copper, nickel, fatty acids and bilirubin. AFP levels in amniotic fluid is used to measure renal loss of protein to screen for spina bifida and anencephaly.
Synonyms:	AFPD; FETA; HPAFP



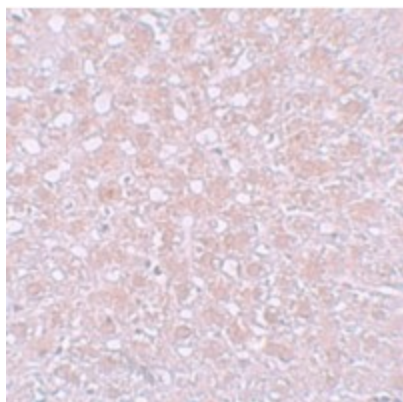
[View online »](#)

Protein Families: Druggable Genome, Secreted Protein

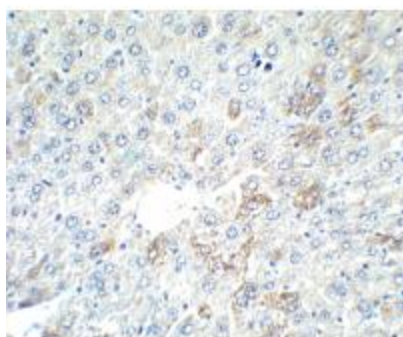
### Product images:



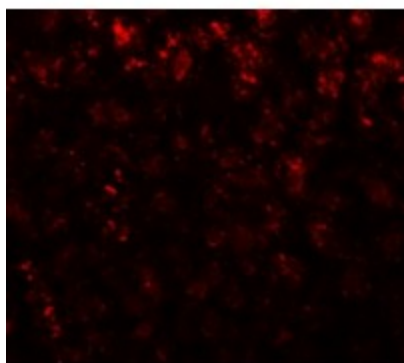
Western blot analysis of AFP in fetal human liver tissue lysate with AFP antibody at (A) 1 ug/ml and (B) 2ug/ml.



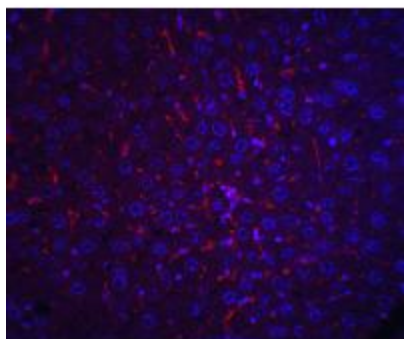
Immunohistochemistry of AFP in rat liver tissue with AFP antibody at 10ug/ml.



Immunohistochemistry of AFP in mouse liver tissue with AFP antibody at 2.5ug/ml.



Immunofluorescence of AFP in rat liver tissue with AFP antibody at 20ug/ml.



Immunofluorescence of AFP in mouse liver tissue with AFP antibody at 20ug/ml.