

## Product datasheet for **TA319607**

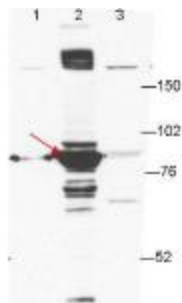
### **Esrp1 Mouse Monoclonal Antibody [Clone ID: 27H12]**

#### **Product data:**

<b>Product Type:</b>	Primary Antibodies
<b>Clone Name:</b>	27H12
<b>Applications:</b>	WB
<b>Recommended Dilution:</b>	ELISA: 1:750,000, WB: 1:1000
<b>Reactivity:</b>	Mouse
<b>Host:</b>	Mouse
<b>Clonality:</b>	Monoclonal
<b>Immunogen:</b>	Anti-Esrp-1 was produced by repeated immunizations of full length recombinant mouse Esrp-1 fusion protein.
<b>Formulation:</b>	0.02 M Potassium Phosphate, 0.15 M Sodium Chloride, pH 7.2
<b>Concentration:</b>	lot specific
<b>Conjugation:</b>	Unconjugated
<b>Storage:</b>	Store at -20°C as received.
<b>Stability:</b>	Stable for 12 months from date of receipt.
<b>Gene Name:</b>	epithelial splicing regulatory protein 1
<b>Database Link:</b>	<a href="#">NP_918944</a> <a href="#">Entrez Gene 207920 Mouse</a> <a href="#">Q3US41</a>
<b>Synonyms:</b>	FLJ20171; RBM35A; RMB35A
<b>Note:</b>	Epithelial splicing regulatory protein 1 (Esrp-1) is an mRNA splicing factor that regulates the formation of epithelial cell-specific isoforms. It specifically regulates the expression of FGFR2-IIIb, an epithelial cell-specific isoform of FGFR2, and also regulates the splicing of CD44, CTNND1, ENAH, 3 transcripts that undergo changes in splicing during the epithelial-to-mesenchymal transition (EMT). EsrpP-1 acts by directly binding specific sequences in mRNAs. It binds the GU-rich sequence motifs in the ISE/ISS-3, a cis-element regulatory region present in the mRNA of FGFR2.



[View online »](#)

**Product images:**

Anti-ESRP-1 by WB shows detection of ESRP-1 in transfected 293T cell extracts (lane 2, arrowhead). Lanes 1 and 3 contain GFP-transfected- and ESRP2-transfected 293T cell lysates, respectively. Briefly, each lane contains approximately 5 ug of lysate. Primary antibody was used at a 1:1000 dilution and followed reacted with a 1:10,000 dilution of an anti-mouse ECL antibody for 1hr at room temperature.