

Product datasheet for **TA319606**

Lefty2 Mouse Monoclonal Antibody [Clone ID: 7C5G1H6H10]

Product data:

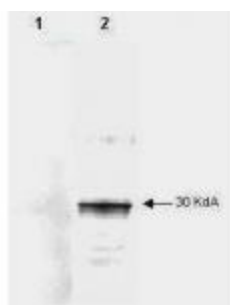
Product Type:	Primary Antibodies
Clone Name:	7C5G1H6H10
Applications:	WB
Recommended Dilution:	ELISA: 1:5,000, WB: 1:2,000
Reactivity:	Human
Host:	Mouse
Clonality:	Monoclonal
Immunogen:	A BALB/c mouse was immunized with a recombinant form of 6X HIS tagged human LEFTY.
Formulation:	0.02 M Potassium Phosphate, 0.15 M Sodium Chloride, pH 7.2
Concentration:	lot specific
Conjugation:	Unconjugated
Storage:	Store at -20°C as received.
Stability:	Stable for 12 months from date of receipt.
Gene Name:	left-right determination factor 2
Database Link:	NP_796073 Entrez Gene 7044 Human P57785
Synonyms:	EBAF; LEFTA; LEFTYA; MGC46222; TGF-beta-4; TGFB4



[View online »](#)

Note: During vertebrate embryogenesis, a left-right axis is established. Secreted growth factors of the TGF-beta family, including gene products derived from nodal, lefty-1 and lefty-2, play crucial roles in establishing left-right asymmetries. TGF-beta (Transforming growth factor-beta) is a pleiotropic cytokine that regulates growth and differentiation of diverse types of cells. TGF-beta actions are directed by ligand-induced activation of TGF-beta receptors. Complexes formed move into the nucleus, where they act as components of a transcriptional complex. Lefty, a novel member of the TGF-beta superfamily, inhibits TGF-beta signaling. Lefty acts to inhibit phosphorylation of Smad2 following activation of the TGF-beta receptor. Lefty also inhibits events downstream from R-Smad phosphorylation. Lefty provides a repressed state of TGF-beta-responsive genes. The Lefty family is comprised of Lefty 1 and Lefty 2 in mouse, and Lefty A and Lefty B in humans. Members of the TGF-beta superfamily require processing for their activation. Cleavage is therefore an essential step for Lefty activation. Lefty is synthesized as a large inactive precursor (42 Kda) that must be endoproteolytically processed to release the bioactive polypeptide (28 kDa and 34 kDa forms). The 28kDa form induces MAPK activity.

Product images:



Mab anti-Human LEFTY antibody to detect by WB partially purified recombinant 6X His tagged human LEFTY. The blot was incubated with a 1:2,000 dilution of Mab anti-Human LEFTY at RT for 30 min followed by detection using IRDye™800 labeled Goat-a-Mouse IgG [H&L] diluted 1:1,000. Lane 1 contains an unrelated 6X His tagged protein and shows that the antibody does not recognize the epitope tag. Lane 2 contains partially purified recombinant human LEFTY.