

Product datasheet for **TA319604**

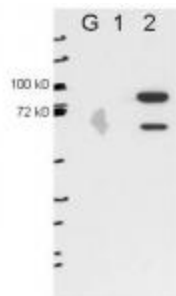
Esrp2 Mouse Monoclonal Antibody [Clone ID: 22C5.H7.A6]

Product data:

Product Type:	Primary Antibodies
Clone Name:	22C5.H7.A6
Applications:	WB
Recommended Dilution:	ELISA: 1:100,000, WB: 1:1000
Reactivity:	Mouse
Host:	Mouse
Clonality:	Monoclonal
Immunogen:	Anti-Esrp-2 is produced by repeated immunizations of full length recombinant mouse Esrp-2 fusion protein.
Formulation:	0.02 M Potassium Phosphate, 0.15 M Sodium Chloride, pH 7.2
Concentration:	lot specific
Conjugation:	Unconjugated
Storage:	Store at -20°C as received.
Stability:	Stable for 12 months from date of receipt.
Gene Name:	epithelial splicing regulatory protein 2
Database Link:	NP_789808 Entrez Gene 77411 Mouse Q8K0G8
Synonyms:	FLJ21918; FLJ22248; RBM35B
Note:	Epithelial splicing regulatory protein 2 (Esrp-2) is an mRNA splicing factor that regulates the formation of epithelial cell-specific isoforms. It specifically regulates the expression of FGFR2-IIIb, an epithelial cell-specific isoform of FGFR2, and also regulates the splicing of CD44, CTNND1, ENAH, 3 transcripts that undergo changes in splicing during the epithelial-to-mesenchymal transition (EMT). Esrp-2 acts by directly binding specific sequences in mRNAs. It binds the GU-rich sequence motifs in the ISE/ISS-3, a cis-element regulatory region present in the mRNA of FGFR2.



[View online »](#)

Product images:

Anti-ESRP2 by WB shows detection of ESRP2 in transfected 293T cell extracts (lane 2). Lanes G and 1 contain 5ug GFP-transfected- and ESRP1-transfected 293T cell lysates, respectively. Briefly, each lane contains approximately 5 ug of lysate. Primary antibody was used at a 1:1000 dilution. The membrane was washed and reacted with a 1:10,000 dilution of an anti-mouse ECL antibody. The bands shown are full length FLAG-ESRP2 (~80kDa) and a slightly lower band that is specific to ESRP2.