

Product datasheet for **TA319603**

Cytokeratin 6C (KRT6C) Mouse Monoclonal Antibody [Clone ID: C11]

Product data:

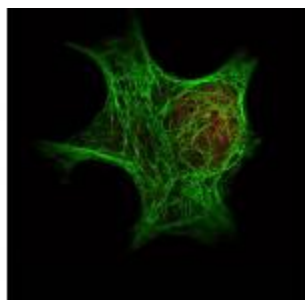
Product Type:	Primary Antibodies
Clone Name:	C11
Applications:	IF, WB
Recommended Dilution:	ELISA: 1:5,000 - 1:20,000, WB: 1:50 - 1:200, IHC: 1:50 - 1:200, IF: 1:50 - 1:200, IP: 1:100
Reactivity:	Human
Host:	Mouse
Clonality:	Monoclonal
Immunogen:	This protein A purified monoclonal antibody was produced by repeated immunizations with purified human cytoskeletal preparations from A431 cells.
Formulation:	0.02 M Potassium Phosphate, 0.15 M Sodium Chloride, pH 7.2
Conjugation:	Unconjugated
Storage:	Store at -20°C as received.
Stability:	Stable for 12 months from date of receipt.
Gene Name:	keratin 6C
Database Link:	NP_775109 Entrez Gene 286887 Human P48668
Synonyms:	K6E; KRT6E; PPKNEFD
Note:	Cytokeratins (CK) are intermediate filaments of epithelial cells, both in keratinizing tissue (i.e. skin) and non-keratinizing cells (i.e. mesothelial



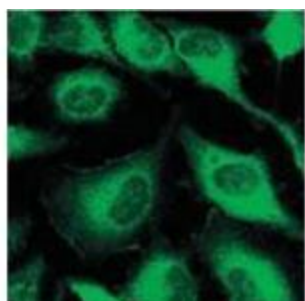
[View online »](#)

Product images:

WB using Immunochemical's Mouse Anti-Keratin antibody. This antibody recognizes a single 56 kDa band corresponding to human keratin as confirmed by the position of molecular weight markers (not shown). A 1:400 dilution of Mab anti-Keratin was used for 2h followed by detection using a 1:5,000 dilution of IRDye™800 conjugated Goat-a-Mouse IgG [H&L] and visualization using the Odyssey® Infrared Imaging System developed by LI-COR.



IF of Immunochemical's Anti-Keratin antibody (TA319603) was used with Dylight 488 goat anti-mouse (shown in green) to detect Keratin by IF. In the same experiment, polyclonal Anti-HDAC-1 antibody ([TA319251]) was used with Atto425 Anti-Rabbit IgG (shown in red) to detect HDAC-1.



Immunofluorescence using Immunochemical's Mouse Anti-Keratin antibody. Confocal slices of HeLa cells are between 0.5 and 0.6 μm where the image is taken near the bottom of the cell. Use FITC a 1:2,000 dilution of FITC conjugated Goat-a-Mouse IgG [H&L] (610-102-121) for detection