

Product datasheet for **TA319602**

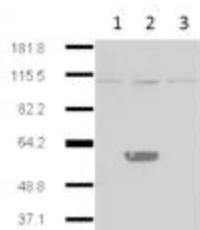
Ido2 Mouse Monoclonal Antibody [Clone ID: 1HC]

Product data:

Product Type:	Primary Antibodies
Clone Name:	1HC
Applications:	WB
Recommended Dilution:	ELISA: 1:5000-1:50000, WB: 1:500-1:1500, IF: 1:50-1:100
Reactivity:	Mouse
Host:	Mouse
Clonality:	Monoclonal
Immunogen:	Anti-IDO2 (MOUSE) Monoclonal Antibody was produced in mouse by repeated immunizations with complete mouse IDO2 protein followed by hybridoma development.
Formulation:	0.02 M Potassium Phosphate, 0.15 M Sodium Chloride, pH 7.2
Concentration:	lot specific
Conjugation:	Unconjugated
Storage:	Store at -20°C as received.
Stability:	Stable for 12 months from date of receipt.
Gene Name:	indoleamine 2,3-dioxygenase 2
Database Link:	NP_666061 Entrez Gene 209176 Mouse Q8R0V5
Synonyms:	INDOL1
Note:	Indoleamine 2,3-dioxygenase 2 (IDO2) is related to IDO1, and may play a role in T and B Cell Immunity. IDO2's role in immune regulation will become clearer following the completion of genetic knock-out studies. IDO2 is expressed in a few select cell types and levels of protein expression appear to be very low, perhaps below the level of detection by IHC. Small-molecule inhibitors of indoleamine 2,3-dioxygenase (IDO) are currently being translated to clinic for evaluation as cancer therapeutics.



[View online »](#)

Product images:

Western Blot of Mouse Anti-IDO2 antibody. Lane 1: HEK293 no transgene cell extracts. Lane 2: mouse IDO-2 transgene expressed in 293HEK. Lane 3: mouse IDO-1 transgene expressed in 293HEK. Primary antibody: IDO2 monoclonal Antibody. Secondary antibody: IRDye800™ mouse secondary antibody at 1:10,000 for 45 min at RT. Block: 5% BLOTTO overnight at 4°C. Predicted/Observed size: 44.4 kDa, ~60 kDa for IDO 2. Other band (s): IDO2 splice variants and isoforms.