

Product datasheet for **TA319599**

IL17F Mouse Monoclonal Antibody [Clone ID: 4H1629.1]

Product data:

Product Type:	Primary Antibodies
Clone Name:	4H1629.1
Applications:	IHC, WB
Recommended Dilution:	WB: 0.5ug/mL, IHC: 5ug/mL
Reactivity:	Human
Host:	Mouse
Clonality:	Monoclonal
Immunogen:	Anti-IL-17F (MOUSE) Monoclonal Antibody was produced in mouse by repeated immunizations with mature full length recombinant human IL-17F produced in E.coli followed by hybridoma development.
Formulation:	0.02 M Potassium Phosphate, 0.15 M Sodium Chloride, pH 7.2 with 0.01% (w/v) Sodium Azide
Concentration:	lot specific
Conjugation:	Unconjugated
Storage:	Store at -20°C as received.
Stability:	Stable for 12 months from date of receipt.
Gene Name:	interleukin 17F
Database Link:	NP_443104 Entrez Gene 112744 Human Q96PD4
Synonyms:	CANDF6; IL-17F; ML-1; ML1

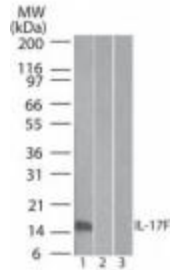


[View online »](#)

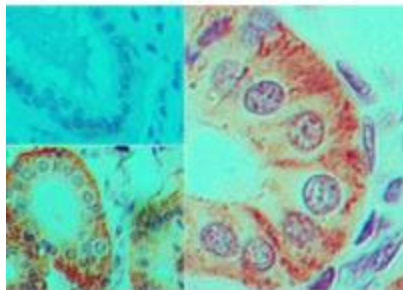
Note: Anti-L-17F recognizes IL-17F (also known as Cytokine ML-1 or Interleukin-24). IL-17F is produced and secreted by CD8+ T cells, NK cells, NKT cells and LTi cells. The main functions of IL-17F are neutrophil recruitment and immunity to extracellular pathogen. More importantly, IL-17F drives inflammation and auto-immunity. IL-17A and IL-17F are by far the best characterized cytokines of the IL-17 cytokine family. IL-17F dimerizes in a parallel fashion similar to nerve growth factor and other neurotrophins. Its dimerization is critical to fulfill its activity. When secreted by activated T cells, IL-17F can stimulate the production of other cytokines such as IL-6, IL-8 granulocyte colony-stimulating factor and, can stimulate cartilage matrix turnover. Defects in IL17F are the cause of familial candidiasis type 6 (CANDF6). CANDF6 is a rare disorder with altered immune responses and impaired clearance of fungal infections, selective against *Candida*. Anti-IL-17E cytokine antibody is ideal for investigators involved in Immunology, Signal Transduction research, Cancer and Inflammatory pathologies.

Protein Families: Druggable Genome, Secreted Protein

Product images:



Western Blot of Mouse Anti-IL-17F antibody Lane 1: human full length recombinant IL-17F protein Lane 2: mouse full length recombinant IL-17F protein Lane 3: rat full length recombinant IL-17F protein Load: 20 ng/lane Primary antibody: Anti-IL-17F antibody at 0.5ug/mL for overnight at 4°C



Immunohistochemistry of Mouse Anti-IL-17F antibody Tissue: human colon tissue Fixation: formalin-fixed, paraffin-embedded Primary antibody: isotype control (top left), Mouse Anti-IL-17F antibody (bottom left, right) at 5 ug/ml