

Product datasheet for **TA319595**

IL17E (IL25) Mouse Monoclonal Antibody [Clone ID: 11K8B1]

Product data:

Product Type:	Primary Antibodies
Clone Name:	11K8B1
Applications:	FC, WB
Recommended Dilution:	WB: 0.5ug/mL, FC: 1ug/mL
Reactivity:	Human
Host:	Mouse
Clonality:	Monoclonal
Immunogen:	Anti-IL-17E (MOUSE) Monoclonal Antibody was produced in mouse by repeated immunizations with mature full length recombinant human IL-17E produced in E.coli followed by hybridoma development.
Formulation:	0.02 M Potassium Phosphate, 0.15 M Sodium Chloride, pH 7.2
Concentration:	lot specific
Conjugation:	Biotin
Storage:	Store at -20°C as received.
Stability:	Stable for 12 months from date of receipt.
Gene Name:	interleukin 25
Database Link:	NP_073626 Entrez Gene 64806 Human Q9H293
Synonyms:	IL17E



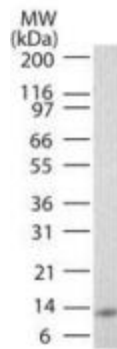
[View online »](#)

Note: Anti-IL17E recognizes IL-17E (also known as IL25). IL-17E is produced and secreted by intra-epithelial lymphocytes, lung epithelial cells, alveolar macrophages, eosinophils, basophils, NKT cells, mast cells and cells of the gastro-intestinal tract and uterus. IL-17E stimulates the production of Th2-type cytokines. IL-17E limits Th17 cell development by inducing the expression of IL-13 by dendritic cells or by inhibiting IL-23 production by macrophages. Induces activation of NF-kappa-B and stimulates production of the proinflammatory chemokine IL-8. A number of cytokines, including IL-17E, have been implicated as oncogenes, reflecting the importance of these proteins in cell growth and survival. Anti-IL-17E cytokine antibody is ideal for investigators involved in Immunology, Signal Transduction research, Cancer and pro-inflammatory pathologies.

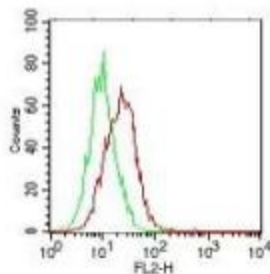
Protein Families: Druggable Genome, Secreted Protein, Transmembrane

Protein Pathways: Cytokine-cytokine receptor interaction

Product images:



Anti-IL-17E Biotin Conjugated Antibody - Western Blot Western Blot of Mouse anti-IL-17E antibody in full length recombinant protein using IL-17E antibody at 0.5 ug/mL



Anti-IL-17E Antibody - Flow Cytometry Cells: PC3 cells Primary antibody: 1 ug of IL-17E (red), control (green) Secondary antibody: anti-mouse IgG PE conjugated secondary antibody