

Product datasheet for **TA319583**

TRPC6 Mouse Monoclonal Antibody [Clone ID: 3F2.H10.F2]

Product data:

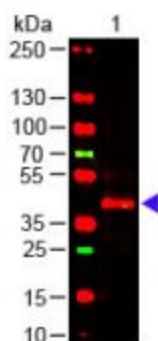
Product Type:	Primary Antibodies
Clone Name:	3F2.H10.F2
Applications:	IHC, WB
Recommended Dilution:	ELISA: 1:10,000 - 1:50,000, WB: 1:500- 1:2,000, IHC: 2.5 ug/mL
Reactivity:	Human, Chimpanzee
Host:	Mouse
Clonality:	Monoclonal
Immunogen:	This monoclonal antibody was produced by repeated immunizations with a synthetic peptide corresponding to a region near the carboxy terminus of human TRPC6 protein.
Formulation:	0.02 M Potassium Phosphate, 0.15 M Sodium Chloride, pH 7.2
Concentration:	lot specific
Conjugation:	Unconjugated
Storage:	Store at -20°C as received.
Stability:	Stable for 12 months from date of receipt.
Gene Name:	transient receptor potential cation channel subfamily C member 6
Database Link:	NP_004612 Entrez Gene 7225 Human Q9Y210
Synonyms:	FSGS2; TRP6

[View online »](#)

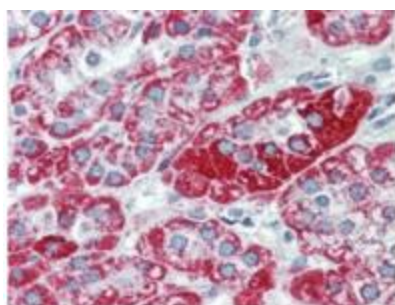
Note: TRPC6, also known as TRP6, short transient receptor potential channel 6 and transient receptor potential cation channel subfamily C member 6, is thought to form a receptor-activated non-selective calcium permeant cation channel. TRPC6 is probably operated by a phosphatidylinositol second messenger system activated by receptor tyrosine kinases or G-protein coupled receptors. It is activated by diacylglycerol (DAG) in a membrane-delimited fashion, independently of protein kinase C and may not to be activated by intracellular calcium store depletion. Defects in this gene are a cause of focal segmental glomerulosclerosis (FSGS). Expression of this protein has been reported in tissues such as placenta, lung, spleen, ovary, small intestine, and renal podocytes. Immunohistochemistry studies using polyclonal antibodies to this target have shown moderate to strong staining in cell types such as neurons, breast, respiratory, squamous and prostate epithelium, epidermis, placental trophoblasts, dendritic cells, and subsets of immune cells, and faint to moderate staining of adrenal, colon, ganglion cells, hepatocytes, heart, and testis.

Protein Families: Druggable Genome, Ion Channels: Transient receptor potential, Transmembrane

Product images:



Western Blot of Mouse anti-TRPC6 Antibody Lane 1: Mouse Kidney WCL Load: 10 ug per lane
Primary antibody: TRPC6 Antibody at 1:1000 for overnight at 4°C Secondary antibody: DyLight™ 649 donkey anti-mouse at 1:20,000 for 30 min at RT Block: MB-070 for 30 min at RT



IHC using anti-TRPC6 monoclonal antibody shows detection of TRPC6 in human adrenal (cortex) tissue (40X). The antibody was used a dilution to 2.5 ug/mL. The image shows strong staining with minimal background staining. Tissue was formalin fixed and paraffin embedded. No pre-treatment of sample was required. The image shows the localization of antibody as the precipitated red signal, with a hematoxylin purple nuclear counterstain.