

Product datasheet for **TA319577**

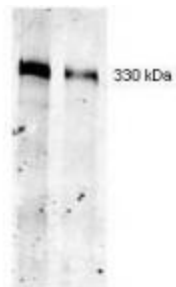
Thyroglobulin (TG) Mouse Monoclonal Antibody [Clone ID: 2H11]

Product data:

Product Type:	Primary Antibodies
Clone Name:	2H11
Applications:	WB
Recommended Dilution:	ELISA: 1:20,000 - 1:100,000, WB: 1:50 - 1:200, IHC: 1:50 - 1:200
Reactivity:	Human, Mouse, Rat, Dog
Host:	Mouse
Clonality:	Monoclonal
Immunogen:	This protein A purified monoclonal antibody was produced by repeated immunizations with human thyroglobulin protein.
Formulation:	0.02 M Potassium Phosphate, 0.5 M Sodium Chloride, pH 7.2
Concentration:	lot specific
Conjugation:	Unconjugated
Storage:	Store at -20°C as received.
Stability:	Stable for 12 months from date of receipt.
Gene Name:	thyroglobulin
Database Link:	NP_003226 Entrez Gene 21819 MouseEntrez Gene 24826 RatEntrez Gene 482047 DogEntrez Gene 7038 Human P01266
Synonyms:	AITD3; TGN
Note:	Thyroglobulin (Tg) is synthesized by the follicular epithelial cells of the thyroid and secreted from the thyroid gland with the stimulation of TSH and/or thyroid stimulating immunoglobulins. Thyroglobulin is a prognostic marker for Graves` disease. Thyroglobulin antibody has been useful in the positive identification of thyroid carcinomas of the papillary and follicular types.
Protein Families:	Druggable Genome
Protein Pathways:	Autoimmune thyroid disease



[View online »](#)

Product images:

WB using anti-Thyroglobulin antibody. Separation was achieved under reducing conditions using a pre-cast 5% Tris-HCl gel from Bio-Rad Laboratories. This antibody recognizes a single 330 kDa band corresponding to human thyroglobulin as confirmed by the position of molecular weight markers (not shown). A 1:400 dilution of Mab anti-Thyroglobulin was used for 2h followed by detection using a 1:5,000 dilution of IRDye™800 conjugated Goat-a-Mouse IgG [H&L].