

## Product datasheet for **TA319572**

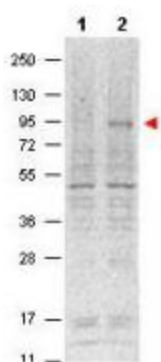
### Stat5a Mouse Monoclonal Antibody [Clone ID: 5F6.F1]

#### Product data:

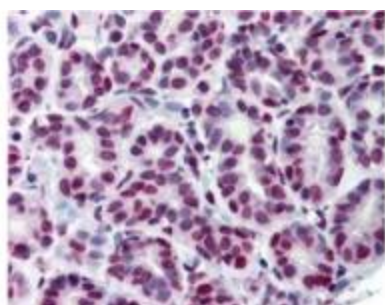
Product Type:	Primary Antibodies
Clone Name:	5F6.F1
Applications:	IF, IHC, WB
Recommended Dilution:	ELISA: 1:20,000, WB: 1:500 - 1:2,000, IHC: 20-40 ug/ml, IF: 1:50-1:1000
Reactivity:	Human, Mouse, Rat
Modifications:	Phospho-specific
Host:	Mouse
Clonality:	Monoclonal
Immunogen:	Anti-STAT5 phospho Y694 monoclonal antibody was produced by repeated immunizations with a synthetic peptide corresponding to residues surrounding Y694 of mouse STAT5a protein.
Formulation:	0.02 M Potassium Phosphate, 0.15 M Sodium Chloride, pH 7.2
Concentration:	lot specific
Conjugation:	Unconjugated
Storage:	Store at -20°C as received.
Stability:	Stable for 12 months from date of receipt.
Gene Name:	signal transducer and activator of transcription 5A
Database Link:	<a href="#">NP_035618</a> <a href="#">Entrez Gene 6776 HumanEntrez Gene 24918 RatEntrez Gene 20850 Mouse P42230</a>
Synonyms:	MGF; STAT5
Note:	Signal transducer and activator of transcription 5 (Stat5) belongs to a family of cytoplasmic transcription factors that can be activated (phosphorylated) by a cell surface receptor. Phosphorylation at Tyr694 is obligatory for Stat5 activation. Stat5 has two isoforms, Stat5a and Stat5β. Aberrant Stat5 activation has been implicated in the pathogenesis of chronic myelogenous leukemia, prostate and breast cancer and tumor metastasis. Stat5 is localized in the cytoplasm and upon phosphorylation at Y694 is translocated to the nucleus. Ideal for Cancer, Chromatin & Nuclear Signaling and Signal Transduction research.



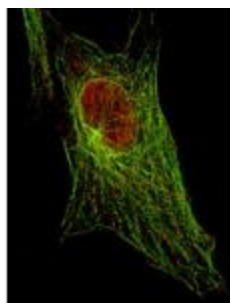
[View online »](#)

**Product images:**

WB using anti-Stat5 pY694 antibody shows detection of phosphorylated Stat5 (indicated by arrowhead at ~91 kDa) in NK92 cells after 30 min treatment with 1Ku of IL-2 (lane 2). No reactivity is seen for non-phosphorylated Stat5 in untreated cells (lane 1). The membrane was probed with the primary antibody at a 1:1,000 dilution, overnight at 4°. For detection DyLight™800 conjugated Gt-a-Mouse IgG was used at a 1:20,000 dilution for 30 min at RT.



IHC using Anti-Stat5 pY694 monoclonal antibody shows detection of phosphorylated Stat5pY694 in human breast tissue (40X). The antibody was used a dilution to 20 ug/mL. The image shows breast epithelium with moderate nuclear staining. Tissue was formalin fixed and paraffin embedded. No pre-treatment of sample was required. The image shows the localization of antibody as the precipitated red signal, with a hematoxylin purple nuclear counterstain.



Anti-Stat5 pY694 (MOUSE) Monoclonal Antibody (1:500) detecting Stat5 in 3T3 cells (immunofluorescent STED microscopy). Red represents Stat5 pY694 protein. Green represents tubulin.