

## Product datasheet for **TA319567**

### Macrophage Inflammatory Protein 3 alpha (CCL20) Mouse Monoclonal Antibody [Clone ID: 3N2D9]

#### Product data:

Product Type:	Primary Antibodies
Clone Name:	3N2D9
Applications:	WB
Recommended Dilution:	WB: 0.5ug/mL
Reactivity:	Human
Host:	Mouse
Clonality:	Monoclonal
Immunogen:	Anti-MIP-3a (MOUSE) Monoclonal Antibody was produced in mouse by repeated immunizations with mature full length recombinant human MIP-3a produced in E.coli followed by hybridoma development.
Formulation:	0.02 M Potassium Phosphate, 0.15 M Sodium Chloride, pH 7.2
Concentration:	lot specific
Conjugation:	Biotin
Storage:	Store at -20°C as received.
Stability:	Stable for 12 months from date of receipt.
Gene Name:	C-C motif chemokine ligand 20
Database Link:	<a href="#">NP_001123518</a> <a href="#">Entrez Gene 6364 Human P78556</a>
Synonyms:	CKb4; Exodus; LARC; MIP-3-alpha; MIP-3a; MIP3A; SCYA20; ST38



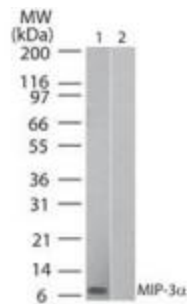
[View online »](#)

**Note:** MIP-3a (also known as C-C motif chemokine 20, small-inducible cytokine A20, macrophage inflammatory protein 3 alpha, MIP-3-alpha, liver and activation-regulated chemokine, CC chemokine LARC and beta chemokine exodus-1) is a chemotactic factor that attracts lymphocytes and, slightly, neutrophils, but not monocytes. MIP-3a inhibits proliferation of myeloid progenitors in colony formation assays and may be involved in formation and function of the mucosal lymphoid tissues by attracting lymphocytes and dendritic cells towards epithelial cells. C-terminal processed forms have been shown to be equally chemotactically active for leukocytes. MIP-3a also possesses antibacterial activity against E.coli and S.aureus. MIP-3a is a secreted protein that is expressed predominantly in the liver, lymph nodes, appendix, peripheral blood lymphocytes, and fetal lung. Low levels of expression are also seen in thymus, prostate, testis, small intestine and colon. C-terminal processed forms which lack 1, 3 or 6 amino acids are produced by proteolytic cleavage after secretion from peripheral blood monocytes.

**Protein Families:** Druggable Genome, Secreted Protein

**Protein Pathways:** Chemokine signaling pathway, Cytokine-cytokine receptor interaction

### Product images:



Western Blot of Human MIP 3a (Mouse) Antibody  
Lane 1: human recombinant MIP-3a Lane 2:  
mouse recombinant MIP-3a Primary antibody:  
Human MIP 3a (RAT) Antibody at 0.5 ug/ml for  
overnight at 4°C Secondary antibody: IRDye800™  
goat anti-rabbit at 1:10,000 for 45 min at RT  
Block: 5% BLOTTO overnight at 4°C