

Product datasheet for **TA319555**

GPR48 (LGR4) Mouse Monoclonal Antibody [Clone ID: 6G8.B3.G5.C3]

Product data:

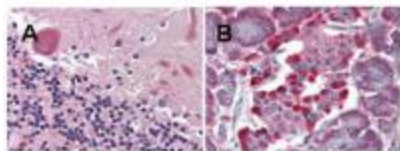
| | |
|------------------------------|---|
| Product Type: | Primary Antibodies |
| Clone Name: | 6G8.B3.G5.C3 |
| Applications: | IHC |
| Recommended Dilution: | ELISA: 1:20,000 - 1:100,000, WB: 1:500 - 1:3,000, IHC: 5 ug/mL |
| Reactivity: | Human, Chimpanzee, Macaque |
| Host: | Mouse |
| Clonality: | Monoclonal |
| Immunogen: | This monoclonal antibody was produced by repeated immunizations with a synthetic peptide corresponding to an internal region of human LGR4 protein. The hybridoma was produced by fusing BALB/c mouse splenocytes and mouse myeloma SP2/O cells using conventional technology. |
| Formulation: | 0.02 M Potassium Phosphate, 0.15 M Sodium Chloride, pH 7.2 |
| Concentration: | lot specific |
| Conjugation: | Unconjugated |
| Storage: | Store at -20°C as received. |
| Stability: | Stable for 12 months from date of receipt. |
| Gene Name: | leucine-rich repeat containing G protein-coupled receptor 4 |
| Database Link: | NP_060960 Entrez Gene 55366 Human Q9BXB1 |
| Synonyms: | BNMD17; GPR48 |
| Note: | LGR4, also known as leucine-rich repeat-containing G protein-coupled receptor 4, is a G protein-coupled receptors (GPCRs). GPCRs are membrane bound proteins that play key roles in a variety of physiologic functions. Members of the leucine-rich GPCR (LGR) family, such as GPR48, have multiple N-terminal leucine-rich repeats (LRRs) and a 7-transmembrane domain. LGR4 is an orphan GPCR reported to be expressed in steroidogenic tissues such as placenta, ovary, testis, adrenal, pancreas, prostate, and thyroid, as well as in spinal cord, stomach, heart, and kidney. |



[View online »](#)

Protein Families: Druggable Genome, GPCR, Transmembrane

Product images:



Anti-LGR4 monoclonal antibody was used diluted to 5 ug/ml to detect LGR4 staining at the membrane of cells in various human tissues. A. Brain cerebellum. B. Pancreas islet.