

Product datasheet for **TA319554**

p21 (CDKN1A) Mouse Monoclonal Antibody [Clone ID: WA-1]

Product data:

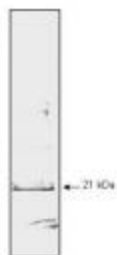
Product Type:	Primary Antibodies
Clone Name:	WA-1
Applications:	WB
Recommended Dilution:	ELISA: 1:5,000 - 1:20,000, WB: 1:2,000 - 1:10,000, IP: 1:100
Reactivity:	Human
Host:	Mouse
Clonality:	Monoclonal
Immunogen:	This protein A purified monoclonal antibody was produced by repeated immunizations with recombinant human p21 fusion protein.
Formulation:	0.02 M Potassium Phosphate, 0.5 M Sodium Chloride, pH 7.2
Concentration:	lot specific
Conjugation:	Unconjugated
Storage:	Store at -20°C as received.
Stability:	Stable for 12 months from date of receipt.
Gene Name:	cyclin-dependent kinase inhibitor 1A
Database Link:	NP_000380 Entrez Gene 1026 Human P38936
Synonyms:	CAP20; CDKN1; CIP1; MDA-6; P21; p21CIP1; SDI1; WAF1
Note:	p21WAF1 is a tumor suppressor gene product critical to maintain proper regulatory control of cell division. p21WAF1 inhibits cyclin/cyclin-dependent kinase (cdk) complexes, causing cell cycle arrest by blocking cell division at the S phase. Various mutations of tumor suppressor genes have been associated with different types of cancers. In these cases, somatic gene therapy with wild-type versions of tumor suppressor genes have been contemplated as anti-cancer therapeutic approaches. p21WAF1 contains p53-binding sites in its promoter and expression of p21WAF1 is induced in WI38 fibroblasts with PMA. The induction of and
Protein Families:	Druggable Genome



[View online »](#)

Protein Pathways: Bladder cancer, Cell cycle, Chronic myeloid leukemia, ErbB signaling pathway, Glioma, Melanoma, p53 signaling pathway, Pathways in cancer, Prostate cancer

Product images:



Mab anti-Human p21WAF1 antibody to detect human p21 by WB. Detection occurs after 10 ug of a HeLa whole cell lysate is loaded per lane. The blot was incubated with a 1:1,000 dilution of Mab anti-Human p21WAF1 at RT for 30 min followed by detection using IRDye™800 labeled Goat-a-Mouse IgG [H&L] diluted 1:5,000. The antibody may be used to detect endogenous human p21WAF1.