

Product datasheet for **TA319549**

Mesothelin (MSLN) Mouse Monoclonal Antibody [Clone ID: MB-G10]

Product data:

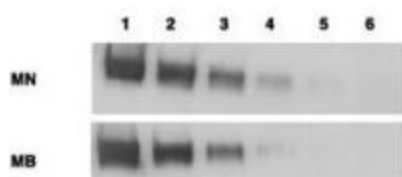
Product Type:	Primary Antibodies
Clone Name:	MB-G10
Applications:	IHC, WB
Recommended Dilution:	ELISA: 1:10,000 - 1:50,000, WB: 1:1,000, IHC: 1:100
Reactivity:	Human
Host:	Mouse
Clonality:	Monoclonal
Immunogen:	This antibody was produced in mice by repeated immunizations with a recombinant protein corresponding to the extracellular domain of human mesothelin.
Formulation:	0.02 M Potassium Phosphate, 0.15 M Sodium Chloride, pH 7.2
Concentration:	lot specific
Conjugation:	Unconjugated
Storage:	Store at -20°C as received.
Stability:	Stable for 12 months from date of receipt.
Gene Name:	mesothelin
Database Link:	NP_001170826 Entrez Gene 10232 Human Q13421
Synonyms:	MPF; SMRP

[View online »](#)

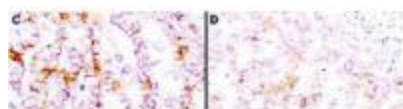
Note: Anti Mesothelin Antibody recognizes Mesothelin that is a glycosyl-phosphatidylinositol-anchored glycoprotein present on the cell surface of various human solid tumors. The mesothelin (MSLN) gene encodes a 71-kDa precursor protein that is processed to a 40-kDa glycosylphosphatidylinositol-anchored protein that composes the mature portion and an NH2 terminal 31-kDa fragment called megakaryocyte-potentiating factor that is released from the cell. Mesothelin is a tumor differentiation antigen present at low levels on a restricted set of normal adult tissues, such as mesothelium, but aberrantly over expressed in mesotheliomas, ovarian, and pancreatic cancers. The biological functions of mesothelin remain elusive. A recent study showed that mesothelin binds to MUC16/CA125, and that this interaction mediates cell adhesion, suggesting that there may be an important role for MUC16/CA125 and mesothelin in the metastatic spread of ovarian cancer.

Protein Families: Druggable Genome, Secreted Protein, Transmembrane

Product images:



Western blotting using anti-mesothelin antibodies to detect mesothelin-Fc at 100 ng (lane 1), 25 ng (lane 2), 6 ng (lane 3), 2 ng (lane 4) and 0.4 ng (lane 5). Lane 6 contains 50 ng of CDC25-Fc. Proteins were separated on 4-20% gradient gel by SDS-PAGE followed by transfer to PVDF membrane. Primary antibody was used at 1 µg/ml followed by reaction with ALP goat anti-mouse IgG and BCIP/NBT substrate. Reprinted with permission from Clin.Cancer Res. 11 (16):5840-6.



Immunohistochemistry using anti-mesothelin antibodies to detect mesothelin in PEF human tissue sections treated by antigen retrieval methods. Anti-mesothelin primary antibodies were used to label these sections as follows: C, MAb MB; and D, MAb MN. Reprinted with permission from Clin.Cancer Res. 11 (16):5840-6.